

# PARKSIDE

# VALE

Concrete Effect Tiles, Slip Resistant (PTV 36+)



12%

5

COLOURS

8

SIZES

2

FINISHES

0

SPECIAL PIECES

If you are looking for a poured concrete floor effect, then Vale is definitely one to consider. Available in 8 sizes in both matt and semi polished finishes and 5 muted tones.

Vale Matt is rated PTV 36+ shod foot in the following colours:

Black Semi Polished  
Black Matt  
Grey Matt  
Taupe Matt  
Sand Matt  
White Matt

## COLOURS AVAILABLE



WHITE MATT



WHITE SEMI POLISHED



SAND MATT



SAND SEMI POLISHED



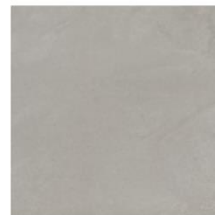
TAUPE MATT



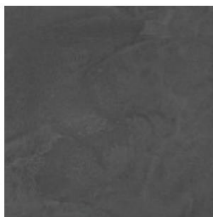
TAUPE SEMI POLISHED



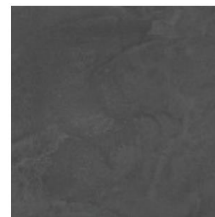
GREY MATT



GREY SEMI POLISHED



BLACK MATT



BLACK SEMI POLISHED

## SIZE GUIDE

200x1200  
300x300  
300x600  
300x1200  
600x600  
600x1200  
800x800  
1000x1000

Group

Bla – Porcelain

	Standard	Requirement	Established Values
Length & Width	ISO 10545-2	±0.6% ~ ±2mm	Conforms
Thickness	ISO 10545-2	±5% ~ ±0.5mm	Conforms
Straightness	ISO 10545-2	±0.5% ~ ±1.5mm	Conforms
Flatness	ISO 10545-2	±0.5% ~ ±2.0mm	Conforms
Rectangularity	ISO 10545-2	±0.5% ~ ±2.0mm	Conforms
Water absorption	ISO 10545-3	Eb ≤ 0.5 %	≤ 0.5 %
Breaking strength	ISO 10545-4	≥ 1300N	2000N
Modulus of rupture	ISO 10545-4	Ave Minimum 35 N/mm2	Ave 50 N/mm2
Resistance to deep abrasion (unglazed tiles)	ISO 10545-6	≤175mm2	≤175mm2
Thermal shock resistance	ISO 10545-9	Pass according to EN ISO 10545-1	Resistant
Frost Resistance	ISO 10545-12	Pass according to EN ISO 10545-1	Resistant
Resistance to household chemicals and swimming pool salts	ISO 10545-13	Min Class UB	UA
Resistance to high concentrations of alkalis and acids	ISO 10545-13	Declare Value	UHA
Resistance to low concentrations of alkalis and acids	ISO 10545-13	Declare Value	ULA
Resistance to Stain	ISO 10545-14	Declare Value	Class 5
Reaction to Fire	-	Class A1 A1/FL	A1 A1/FL

Slip Resistance Characteristics	Pendulum Dry (4S Slider 96) +36 PTV	Pendulum Wet (4S Slider 96) +36 PTV	Recycled Content	%
Vale Matt	✓	✓	Vale	12%

The colour representations shown in this data sheet are as accurate as the limitations of the printing process will allow. Due to the manufacturing process of our floor tiles there may be a small variation in the PTV value. The slip resistance values are correct at the time of testing and represent the standard production value. Inadequate cleaning and maintenance will lead to significant reduction in the slip resistance of any tiles. The pendulum test results have been displayed in line with H&S Executive guidelines whereby 0-24 represents high slip potential, 25-35 moderate slip potential & 36+ represents a low slip potential