

# PARKSIDE

SEQUEL

Wall Collection



3

COLOURS

3

SIZES

1

FINISH

0

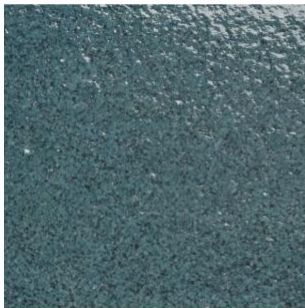
SPECIAL PIECES

The story starts where others finish. With unwanted manufacturing materials that others discard. We take those materials and put them through an ingenious, low-impact process to give them a new life.

The result is a new kind of material, combining glass and porcelain, to create tiles with unique character and low environmental impact.

Sequel Vibe is a stylish collection of handmade glazed tiles, featuring a palette of three organic colours, bringing a unique contemporary twist to any design scheme.

It's called Sequel, because these tiles have already been part of one story. Now an even better one is just beginning...



SHOREDITCH BLUE



PADDINGTON PINK



GREENWICH GREEN

CERAMIC	10mm Thick	Wall/Floor	Interior/ Exterior
	Gloss	All Tiles	All Tiles
100x100	✓	Wall	Interior
100x200	✓	Wall	Interior
75x300	✓	Wall	Interior

We recommend a minimum 3mm grout line

	Standard	Tested Value
Length & Width	ISO 10545-2	-3.2mm - +0.42mm
Thickness	ISO 10545-2	10.99mm – 14.38mm
Straightness (Max Deviation)	ISO 10545-2	-0.35mm - +0.39mm
Flatness	ISO 10545-2	-0.57mm - +0.41mm
Rectangularity	ISO 10545-2	-0.23mm - +0.71mm
Edge Curvature	ISO 10545-2	-0.45mm - +0.47mm
Centre Curvature	ISO 10545-2	-0.15mm – 0.48mm
Determination of Surface Quality	ISO 10545-2	Complies with Standard
Water Absorption	ISO 10545-3	Eb 12.60%
Thermal Expansion	ISO 10545-8	Thermal Expansion Coefficient 20-100 deg C for Direction X: 9.25E-6 °C-Å Thermal Expansion Coefficient 20-100 deg C for Direction Y: 9.38E-6 °C-Å
Thermal Shock Resistance	ISO 10545-9	Complies with Standard
Determination of Moisture Expansion	ISO 10545-10	0%
Determination of Craze Resistance	ISO 10545-11	Complies with Standard
Resistance to Staining	ISO 10545-14	5
Resistance to chemicals	ISO 10545-14	Household Chemicals Class A Low Concentration Acids & Alkalis Class LA High Concentration Acids & Alkalis Class HA
Reaction to Fire	-	Wall class A1
Determination of Tensile Strength for Cementitious Adhesive	ISO 12004-2:2017	>1 N/mm2
Determination of Shear Adhesion Strength of dispersion adhesives	ISO 12004-2:2017	>2 N/mm2
Determination of Shear Adhesion Strength of Reaction Resin Adhesive	ISO 12004-2:2017	>1 N/mm2

The colour representations shown in this data sheet are as accurate as the limitations of the printing process will allow. Due to the manufacturing process of our floor tiles there may be a small variation in the PTV value. The slip resistance values are correct at the time of testing and represent the standard production value. Inadequate cleaning and maintenance will lead to significant reduction in the slip resistance of any tiles. The pendulum test results have been displayed in line with H&S Executive guidelines whereby 0-24 represents high slip potential, 25-35 moderate slip potential & 36+ represents a low slip potential