

# PARKSIDE

# BARNEBY GATES

## PATTERNED TILES



6

PATTERNS

1

SIZES

1

FINISH

0

SPECIAL PIECES



Parkside has collaborated with leading design duo Barneby Gates, on a collection that brings the pair's stunning wallpaper patterns to porcelain tiles.

This range contains 40% recycled content.

### PATTERNS AVAILABLE



DEER DAMASK



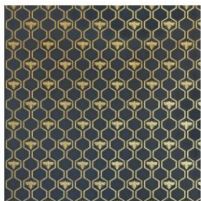
BOLT FROM MARS



PINEAPPLE



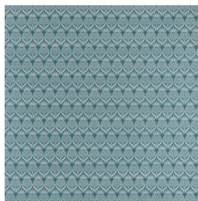
WATERMELON



HONEY BEES



CRAB



ARTICHOKE THISTLE



PHEASANT

### PORCELAIN

3.5mm Thick

Wall/Floor

Matt

All Tiles

1000X2500

✓

Wall

500x1000

✓

Wall

Group

Bla – Porcelain

	Standard	Requirement	Established Values
Length & Width	ISO 10545-2	±0.6% ~ ±2mm	Conforms
Thickness	ISO 10545-2	±5% ~ ±0.5mm	Conforms
Straightness	ISO 10545-2	±0.5% ~ ±1.5mm	Conforms
Flatness	ISO 10545-2	±0.5% ~ ±2.0mm	Conforms
Rectangularity	ISO 10545-2	±0.5% ~ ±2.0mm	Conforms
Water absorption	ISO 10545-3	Eb ≤ 0.5 %	Ave 0.1 %
Breaking strength	ISO 10545-4	≥ 1300N	≥ 1300N
Modulus of rupture	ISO 10545-4	Ave Minimum 35 N/mm2	Ave min 35 N/mm2
Resistance to surface abrasion	ISO 10545-7	Declare Class	NPD
Thermal shock resistance	ISO 10545-9	Pass according to EN ISO 10545-1	Resistant
Frost Resistance	ISO 10545-12	Pass according to EN ISO 10545-1	Resistant
Resistance to household chemicals and swimming pool salts	ISO 10545-13	Min Class GB	GB
Resistance to high concentrations of alkalis and acids	ISO 10545-13	Declare Value	GHB
Resistance to low concentrations of alkalis and acids	ISO 10545-13	Declare Value	GLA
Resistance to Stain	ISO 10545-14	Declare Value	Class 5
Reaction to Fire	-	Class A1 A1/FL	A1 A1/FL

Recycled Content	%
Barneby Gates	40%

The colour representations shown in this data sheet are as accurate as the limitations of the printing process will allow. Due to the manufacturing process of our floor tiles there may be a small variation in the PTV value. The slip resistance values are correct at the time of testing and represent the standard production value. Inadequate cleaning and maintenance will lead to significant reduction in the slip resistance of any tiles. The pendulum test results have been displayed in line with H&S Executive guidelines whereby 0-24 represents high slip potential, 25-35 moderate slip potential & 36+ represents a low slip potential