

22

COLOURS

6

SIZES

1

FINISH

0

SPECIAL PIECES

These luxury vinyl tiles, known as SPC (Stone Polymer Composite) are comprised of a rigid core for added durability. This glue-less format features an integral underlay and click locking system making it fast and easy to install with only a knife.

Ideal for using throughout the home providing both heat and sound insulation, your space is transformed immediately as there's no setting time. 100% waterproof and a diamond coated finish, their natural texture makes it a hygienic, easy-to-clean flooring solution, resistant to scuffs and stains.

COLOURS AVAILABLE

### BERRYALLOC PURE - URBAN STONE & TERRAZZO LIGHT GREY



URBAN STONE GREIGE



URBAN STONE DARK GREY



TERRAZZO LIGHT GREY

#### Available Sizes

61.2cm x 61.2cm x 0.9cm

Group	Luxury Vinyl Flooring Rigid Tile 61.2cm x 61.2cm
-------	--

	Standard	Result
CE/DOP	BS EN 14041	Pass
Usage Classification	BS EN 10874	23 – 33 - 42
Underfloor Heating	EN ISO 12524	Max 27c
Castor Chair	EN ISO 4918	Pass
Reaction to Fire	EN ISO 13501 - 1	BFL-S1
Chemical Resistance	EN ISO 26987	Pass
Thermal Resistance	EN ISO 24343 – 1	0,0315 m2 K/W
Residual Indentation	EN ISO 24343 - 1	<0.10 mm
Slip Resistance	DIN 51130	R11
Sound reduction: impact sound	EN ISO 717 – 2	10 dB
Reflected walking sound	EPLF 021029 – F1	* 9,2 stone
Light fastness	EN ISO 105 – B02	>6
Dimensional Stability	EN ISO 23999	< 0.15%
Antistatic	EN ISO 1815	YES

Slip Resistance Characteristics	Pendulum Dry (4S Slider 96) +36 PTV	Pendulum Wet (4S Slider 96) +36 PTV
Full Range	36+	0 - 24

### RIGID I4F



LIGHTNING OAK



TWILIGHT OAK



HIMALYAN STONE



THASSOS MARBLE

Group	Luxury Vinyl Flooring Rigid Tile 61.2cm x 61.2cm
-------	--

	Standard	Result
CE/DOP	BS EN 14041	Pass
Usage Classification	BS EN 10874	23 – 33 - 42
Underfloor Heating	EN ISO 12524	Max 27c
Castor Chair	EN ISO 4918	Pass
Reaction to Fire	EN ISO 13501 - 1	BFL-S1
Chemical Resistance	EN ISO 26987	Pass
Thermal Resistance	EN ISO 24343 – 1	0,0315 m2 K/W
Residual Indentation	EN ISO 24343 - 1	<0.10 mm
Slip Resistance	DIN 51130	R11
Sound reduction: impact sound	EN ISO 717 – 2	10 dB
Reflected walking sound	EPLF 021029 – F1	* 9,2 stone
Light fastness	EN ISO 105 – B02	>6
Dimensional Stability	EN ISO 23999	< 0.15%
Antistatic	EN ISO 1815	YES

Slip Resistance Characteristics	Pendulum Dry (4S Slider 96) +36 PTV	Pendulum Wet (4S Slider 96) +36 PTV
Full Range	<b>36+</b>	<b>0 - 24</b>

#### Available Sizes

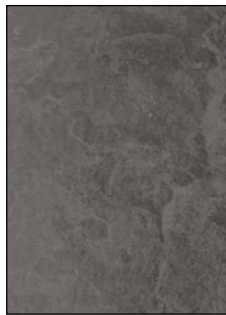
**123cm x 17.9cm x 0.6cm**

The colour representations shown in this data sheet are as accurate as the limitations of the printing process will allow. Due to the manufacturing process of our floor tiles there may be a small variation in the PTV value. The slip resistance values are correct at the time of testing and represent the standard production value. Inadequate cleaning and maintenance will lead to significant reduction in the slip resistance of any tiles. The pendulum test results have been displayed in line with H&S Executive guidelines whereby 0-24 represents high slip potential, 25-35 moderate slip potential & 36+ represents a low slip potential

### RIGID CLICK



MARTA



KLARA



IVAR

<b>Group</b>	Luxury Vinyl Flooring Rigid Click
--------------	-----------------------------------

	Standard	Result
CE/DOP	BS EN 14041	Pass
Usage Classification	BS EN 10874	23 – 33 - 42
Underfloor Heating	EN ISO 12524	Max 27c
Reaction to Fire	EN ISO 13501 - 1	BFL-S1
Chemical Resistance	EN ISO 26987	Pass
Thermal Resistance	EN ISO 24343 – 1	0,0315 m2 K/W
Residual Indentation	EN ISO 24343 - 1	<0.02 mm
Slip Resistance	DIN 51130	R10
Sound reduction: impact sound	ASTM E989 - 12	IIC - 26
Colour fastness	EN ISO 105 – B02	>6
Hardness	ISO 24343 : 2007	< 0.1mm

Slip Resistance Characteristics	Pendulum Dry (4S Slider 96) +36 PTV	Pendulum Wet (4S Slider 96) +36 PTV
Marta	<b>36+</b>	<b>36+</b>

#### Available Sizes

**122cm x 17.6cm x 0.55cm**

**45.7cm x 30cm x 0.55cm**

The colour representations shown in this data sheet are as accurate as the limitations of the printing process will allow. Due to the manufacturing process of our floor tiles there may be a small variation in the PTV value. The slip resistance values are correct at the time of testing and represent the standard production value. Inadequate cleaning and maintenance will lead to significant reduction in the slip resistance of any tiles. The pendulum test results have been displayed in line with H&S Executive guidelines whereby 0-24 represents high slip potential, 25-35 moderate slip potential & 36+ represents a low slip potential

### RIGID SENSES



BRANT



BRADA STORM



BRADA CHESNUT



VERN

<b>Group</b>	Luxury Vinyl Flooring Rigid Sense Click
--------------	---

	Standard	Result
CE/DOP	BS EN 14041	Pass
Usage Classification	BS EN 10874	23 – 33 - 42
Underfloor Heating	EN ISO 12524	Max 27c
Reaction to Fire	EN ISO 13501 - 1	BFL-S1
Chemical Resistance	EN ISO 26987	Pass
Thermal Resistance	EN ISO 24343 – 1	0,0315 m2 K/W
Residual Indentation	EN ISO 24343 - 1	<0.02 mm
Slip Resistance	DIN 51130	R10
Colour fastness	EN ISO 105 – B02	>6
Hardness	ISO 24343 : 2007	< 0.1mm

Slip Resistance Characteristics	Pendulum Dry (4S Slider 96) +36 PTV	Pendulum Wet (4S Slider 96) +36 PTV
Full Range	36+	25 - 35

#### Available Sizes

**122cm x 22cm x 0.55cm**

The colour representations shown in this data sheet are as accurate as the limitations of the printing process will allow. Due to the manufacturing process of our floor tiles there may be a small variation in the PTV value. The slip resistance values are correct at the time of testing and represent the standard production value. Inadequate cleaning and maintenance will lead to significant reduction in the slip resistance of any tiles. The pendulum test results have been displayed in line with H&S Executive guidelines whereby 0-24 represents high slip potential, 25-35 moderate slip potential & 36+ represents a low slip potential

### HERRINGBONE STICKDOWN



**BERGEN  
HERRINGBONE**



**VANTAA  
HERRINGBONE**

### PLANK STICKDOWN



**VANTAA PLANK  
STICKDOWN**



**BERGEN PLANK  
STICKDOWN**

### TILE STICKDOWN



**VISBY**



**MARSTAD**



**KUVIO GREY**



**KUVIO BLUE**

**Group**

**Luxury Vinyl Flooring Stickdown**

	Standard	Result
CE/DOP	BS EN 14041	Pass
Usage Classification	BS EN 10874	23 – 33 - 42
Underfloor Heating	EN ISO 12524	Max 27c
Reaction to Fire	EN ISO 13501 - 1	BFL-S1
Chemical Resistance	EN ISO 26987	Pass
Thermal Resistance	EN ISO 24343 – 1	0,0315 m2 K/W
Residual Indentation	EN ISO 24343 - 1	<0.02 mm
Slip Resistance	DIN 51130	R10
Colour fastness	EN ISO 105 – B02	>6
Hardness	ISO 24343 : 2007	< 0.1mm

#### Available Sizes

**122cm x 17.6cm x 0.55cm**

**45.7cm x 30cm x 0.55cm**

Slip Resistance Characteristics	Pendulum Dry (4S Slider 96) +36 PTV	Pendulum Wet (4S Slider 96) +36 PTV
<b>Full Range</b>	<b>36+</b>	<b>0 - 24</b>

The colour representations shown in this data sheet are as accurate as the limitations of the printing process will allow. Due to the manufacturing process of our floor tiles there may be a small variation in the PTV value. The slip resistance values are correct at the time of testing and represent the standard production value. Inadequate cleaning and maintenance will lead to significant reduction in the slip resistance of any tiles. The pendulum test results have been displayed in line with H&S Executive guidelines whereby 0-24 represents high slip potential, 25-35 moderate slip potential & 36+ represents a low slip potential