

CHORUS

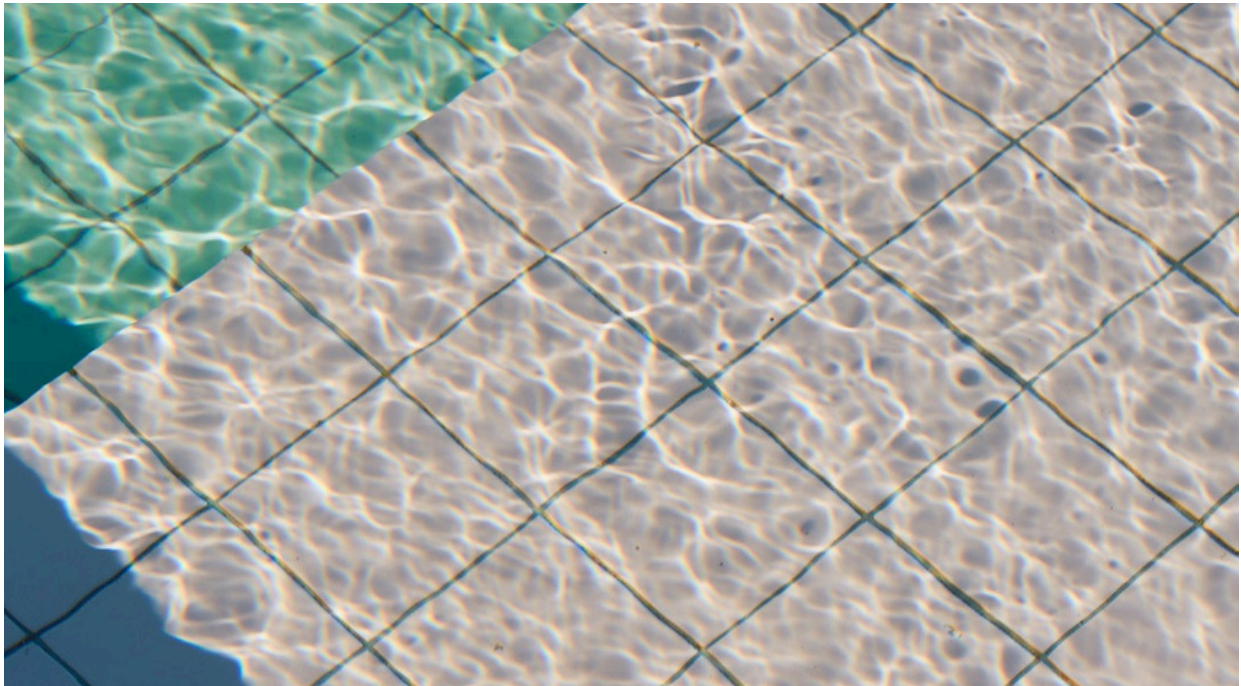
Uni Colour and fine speckle

30 COLOURS / 5 SIZES / 2 FINISHES / 0 SPECIAL PIECES

Chorus offers a large selection of unglazed porcelain tiles in various sizes, shapes, and textures, including finishing pieces all in a matt finish, rated +36 slip resistant.

30 colour/styles and 6 sizes, this range is perfect for those commercial projects.

Properties include high-breaking strength, resistance to wear, slip resistance, acid and frost resistance which make it an ideal range for areas where technicality is key.



CHORUS

Group | BIa – Porcelain

	Standard	Requirements	Established Values
Length & Width	ISO 10545-2	±0.6% ~ ±2mm	Conforms
Thickness	ISO 10545-2	±5% ~ ±0.5mm	Conforms
Straightness	ISO 10545-2	±0.5% ~ ±1.5mm	Conforms
Flatness	ISO 10545-2	±0.5% ~ ±2.0mm	Conforms
Rectangularity	ISO 10545-2	±0.5% ~ ±2.0mm	Conforms
Water absorption	ISO 10545-3	Eb ≤ 0.5%	≤ 0.5%
Breaking strength	ISO 10545-4	≥ 1300N	Ave ≥ 1300N
Modulus of rupture	ISO 10545-4	Ave Minimum 35 N/mm ²	Ave 50 N/mm ²
Resistance to deep abrasion (unglazed tile)	ISO 10545-6	<175mm ³	Ave 123mm ³
Thermal shock resistance	ISO 10545-9	Pass according to EN ISO 10545-1	Resistant
Frost Resistance	ISO 10545-12	Pass according to EN ISO 10545-1	Resistant
Resistance to household chemicals and swimming pool salts	ISO 10545-13	Min Class UB	UA
Resistance to high concentrations of alkalis and acids	ISO 10545-13	Declare Value	NPD
Resistance to low concentrations of alkalis and acids	ISO 10545-13	Declare Value	NPD
Resistance to Stain	ISO 10545-14	Declare Value	Class 3
Reaction to Fire	-	Class A1 A1/FL	A1 A1/FL
Slip Resistance Characteristics	Pendulum Dry (4S Slider 96) +36 PTV P	Pendulum Wet (4S Slider 96) +36 PTV P	
Full Range			

The colour representations shown in this data sheet are as accurate as the limitations of the printing process will allow. Due to the manufacturing process of our floor tiles there may be a small variation in the PTV value. The slip resistance values are correct at the time of testing and represent the standard production value. Inadequate cleaning and maintenance will lead to significant reduction in the slip resistance of any tiles. The pendulum test results have been displayed in line with H&S Executive guidelines whereby 0-24 represents high slip potential, 25-35 moderate slip potential & 36+ represents a low slip potential

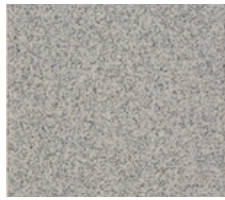
For further information contact: T: 0116 276 2532 – W: www.parkside.co.uk – E: info@parkside.c

Chorus

Uni Colour and fine speckle



01



02



03



04



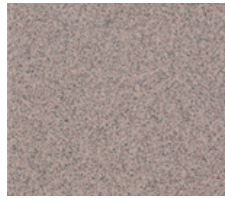
05



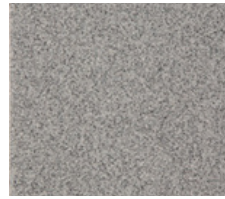
06



07



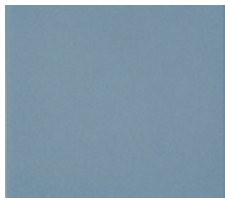
08



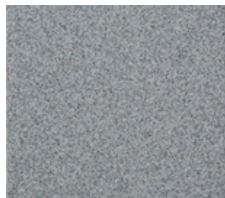
09



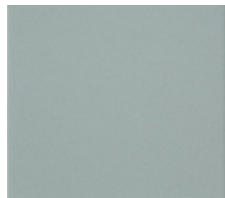
10



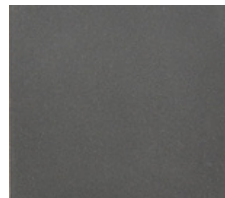
11



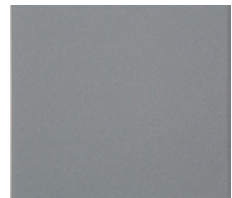
12



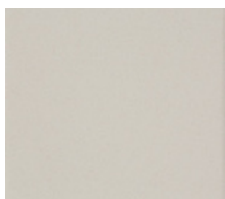
13



14



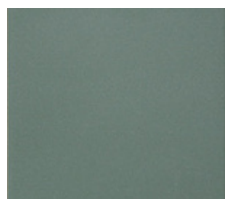
15



16



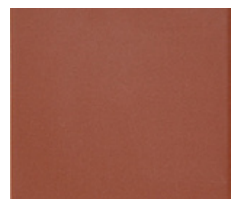
17



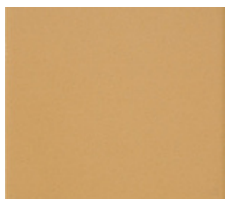
18



19



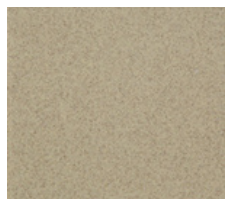
20



21



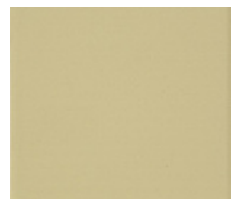
22



23



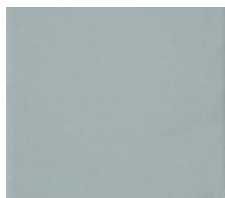
24



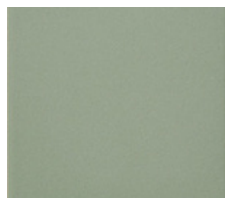
25



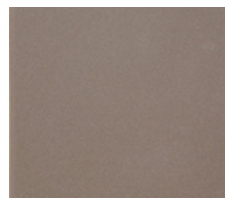
26



27



28



29



30

The colour representations shown in this data sheet are as accurate as the limitations of the printing process will allow. Due to the manufacturing process of our floor tiles there may be a small variation in the PTV value. The slip resistance values are correct at the time of testing and represent the standard production value. Inadequate cleaning and maintenance will lead to significant reduction in the slip resistance of any tiles. The pendulum test results have been displayed in line with H&S Executive guidelines whereby 0-24 represents high slip potential, 25-35 moderate slip potential & 36+ represents a low slip potential

For further information contact: T: 0116 276 2532 – W: www.parkside.co.uk – E: info@parkside.co.uk