

Kirn

4 COLOURS / 2 SIZES / 1 FINISHES

Kirn is a coloured body porcelain available in 4 neutral colours and 1 finish. The neutral colour palette lends itself to any interior design scheme.



Kim



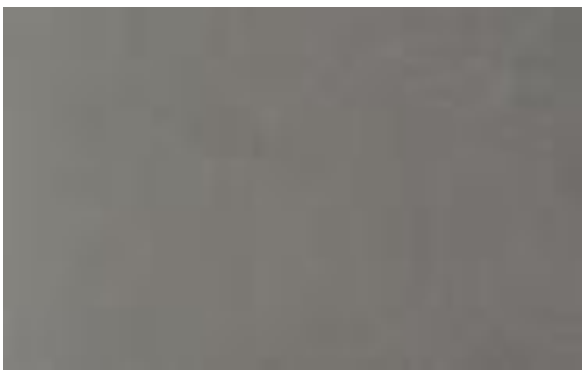
Kirn



BEIGE



BIANCO



GRAPHITE



GREY

The colour representations shown in this data sheet are as accurate as the limitations of the printing process will allow. Due to the manufacturing process of our floor tiles there may be a small variation in the PTV value. The slip resistance values are correct at the time of testing and represent the standard production value. Inadequate cleaning and maintenance will lead to significant reduction in the slip resistance of any tiles. The pendulum test results have been displayed in line with H&S Executive guidelines whereby 0-24 represents high slip potential, 25-35 moderate slip potential & 36+ represents a low slip potential.

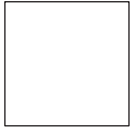
For further information contact: T: 0116 276 2532 – W: www.parkside.co.uk – E: info@parkside.co.uk

Strata Technical Tiles is the partner brand of Parkside Architectural Tiles

Kirn



600X300



600X600

Dimensions	600x600, 600x300 Special pices 300x300
Finish	Matt
Body	Porcelain
Wall/floor	Wall and floor
Group	Bla
Pendulum Dry	36+
Pendulum Wet	36+
Recycled content	-

Range	Standard	Requirement	Typical test value
Length and width	ISO 10545-2	$\pm 0.6\% \sim \pm 2\text{mm}$	Pass
Thickness	ISO 10545-2	$\pm 5\% \leq \pm 0.5\text{mm}$	Pass
Straightness	ISO 10545-2	$\pm 0.5\% \leq \pm 1.5\text{mm}$	Pass
Flatness	ISO 10545-2	$\pm 0.5\% \leq \pm 2.0\text{mm}$	Pass
Rectangularity	ISO 10545-2	$\pm 0.5\% \leq \pm 2.0\text{mm}$	Pass
Water absorption	ISO 10545-3	$E_b \leq 0.5\%$	Pass
Breaking strength	ISO 10545-4	$\geq 1300\text{N}$	Pass
Modulus of rupture	ISO 10545-4	35 N/mm ² Average min	Pass
Resistance to surface abrasion	ISO 10545-7	n/a	NPD
Frost resistance	ISO 10545-12	Complies with standard	Pass
Thermal shock resistance	ISO 10545-9	Complies with standard	Pass
Resistance to stain	ISO 10545-14	Min Class 3	Pass
Resistance to chemicals	ISO 10545-14	Min Class B	Pass
Reaction to fire	-	Floor/wall Class A1 FL/A1	Pass

The colour representations shown in this data sheet are as accurate as the limitations of the printing process will allow. Due to the manufacturing process of our floor tiles there may be a small variation in the PTV value. The slip resistance values are correct at the time of testing and represent the standard production value. Inadequate cleaning and maintenance will lead to significant reduction in the slip resistance of any tiles. The pendulum test results have been displayed in line with H&S Executive guidelines whereby 0-24 represents high slip potential, 25-35 moderate slip potential & 36+ represents a low slip potential.

For further information contact: T: 0116 276 2532 – W: www.parkside.co.uk – E: info@parkside.co.uk

Strata Technical Tiles is the partner brand of Parkside Architectural Tiles