

Vista20

32 COLOURS / 4 SIZES / 1 FINISH / 0 SPECIAL PIECES

Embrace the great outdoors with Vista20. With a variety of stone, wood and fossil effect finishes, these porcelain slabs give you an elegant appeal without the usual maintenance. Extremely hard wearing and stain resistant, there's a choice of installation options including fitting onto pedestals, laying onto sand, gravel, grass or laying with adhesive.





Vista20



Vista20



CEMENTO GREY



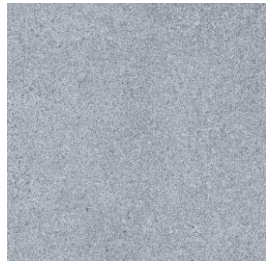
CEMENTO TAUPE



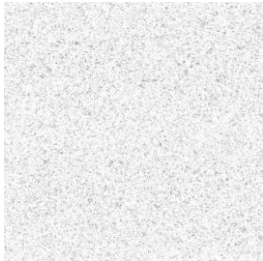
EARTH STONE



MARB STONE



GREY GRANITE



WHITE GRANITE



FOSSIL GREY



FOSSIL WHITE



PETFORD GREY



PETFORD BLACK



BLACK MODULAR EFFECT



GREY MODULAR EFFECT



LIMESTONE



WOOD WALNUT



WOOD GREY



SAND



PEBBLE



SAND MODULAR EFFECT



PEBBLE MODULAR EFFECT



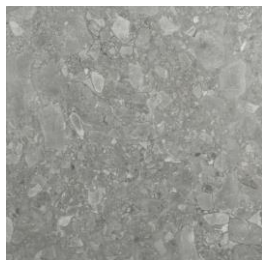
SANDSTONE



SANDSTONE GREY



MARELLE



TERRAZZO GRAPHITE



TERRAZZO GREY



SHALTON GREY

The colour representations shown in this data sheet are as accurate as the limitations of the printing process will allow. Due to the manufacturing process of our floor tiles there may be a small variation in the PTV value. The slip resistance values are correct at the time of testing and represent the standard production value. Inadequate cleaning and maintenance will lead to significant reduction in the slip resistance of any tiles. The pendulum test results have been displayed in line with H&S Executive guidelines whereby 0-24 represents high slip potential, 25-35 moderate slip potential & 36+ represents a low slip potential.

For further information contact: T: 0116 276 2532 – W: www.parkside.co.uk – E: info@parkside.co.uk

Strata Technical Tiles is the partner brand of Parkside Architectural Tiles

Vista20



SHALTON BLACK



SHALTON IVORY



LARKHAM COAL



LARKHAM CONCRETE



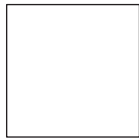
LARKHAM CLOUD



GRANITE GRAPHITE

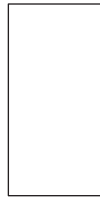


GRANITE GREY



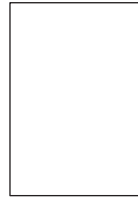
600x600

- Cemento Grey
- Cemento Taupe
- Fossil Grey
- Fossil White
- Petsford Grey
- Petsford Black
- Limestone
- Elvert Sand
- Elvert Pebble
- Sandstone
- Sandstone Grey
- Marelle
- Terrazzo Graphite
- Terrazzo Grey
- Shalton Grey
- Shalton Black
- Shalton Ivory
- Larkham Coal
- Larkham Concrete
- Larkham Cloud
- Granite Graphite
- Granite Grey



450x900

- Fossil Grey
- Fossil White
- Wood Walnut
- Wood Grey
- Shalton Grey
- Shalton Black
- Shalton Ivory



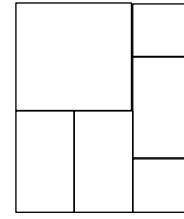
600x900

- Grey Granite
- White Granite



600x1200

- Earth Stone
- Marb Stone



Modular

- Petsford Black
- Petsford Grey
- Elvert Sand
- Elvert Pebble

The colour representations shown in this data sheet are as accurate as the limitations of the printing process will allow. Due to the manufacturing process of our floor tiles there may be a small variation in the PTV value. The slip resistance values are correct at the time of testing and represent the standard production value. Inadequate cleaning and maintenance will lead to significant reduction in the slip resistance of any tiles. The pendulum test results have been displayed in line with H&S Executive guidelines whereby 0-24 represents high slip potential, 25-35 moderate slip potential & 36+ represents a low slip potential.

For further information contact: T: 0116 276 2532 – W: www.parkside.co.uk – E: info@parkside.co.uk

Strata Technical Tiles is the partner brand of Parkside Architectural Tiles

Vista20

GROUP / BLA - PORCELAIN

VISTA20 ELVERT & WICKLIFF

	Standard	Requirement	Established Values
Length and width	ISO 10545-2	±0.6% ~ ±2mm	Conforms
Thickness	ISO 10545-2	±5% ~ ±0.5mm	Conforms
Straightness	ISO 10545-2	±0.5% ~ ±1.5mm	Conforms
Flatness	ISO 10545-2	±0.5% ~ ±2.0mm	Conforms
Rectangularity	ISO 10545-2	±0.5% ~ ±2.0mm	Conforms
Water absorption	ISO 10545-3	$E_b \leq 0.5 \%$	< 0.5 %
Breaking strength	ISO 10545-4	$\geq 1300 \text{ N}$	> 6590 N
Modulus of rupture	ISO 10545-4	Ave Minimum 35 N/mm ²	Ave min 35 N/mm ²
Resistance to surface abrasion	ISO 10545-7	Declare Class	PEI 5
Thermal shock resistance	ISO 10545-9	Pass according to EN ISO 10545-1	Resistant
Frost resistance	ISO 10545-12	Pass according to EN ISO 10545-1	Resistant
Resistance to household chemicals and swimming pool salts	ISO 10545-13	Min Class GB	GA
Resistance to high concentrations of alkalis and acids	ISO 10545-13	Declare Value	GHA
Resistance to low concentrations of alkalis and acids	ISO 10545-13	Declare Value	GLA
Resistance to stain	ISO 10545-14	Declare Value	Class 5
Reaction to fire	-	Class A1 A1/FL	A1 A1/FL

Slip resistance characteristics	Pendulum Dry (4S Slider 96 +36 PTV)	Pendulum Wet (4S Slider 96 +36 PTV)
Full range	✓	✓

The colour representations shown in this data sheet are as accurate as the limitations of the printing process will allow. Due to the manufacturing process of our floor tiles there may be a small variation in the PTV value. The slip resistance values are correct at the time of testing and represent the standard production value. Inadequate cleaning and maintenance will lead to significant reduction in the slip resistance of any tiles. The pendulum test results have been displayed in line with H&S Executive guidelines whereby 0-24 represents high slip potential, 25-35 moderate slip potential & 36+ represents a low slip potential.

For further information contact: T: 0116 276 2532 – W: www.parkside.co.uk – E: info@parkside.co.uk

Strata Technical Tiles is the partner brand of Parkside Architectural Tiles

Vista20

GROUP / BLA - PORCELAIN

VISTA20 BALANCE

	Standard	Requirement	Established Values
Length and width	ISO 10545-2	±0.6% ~ ±2mm	Conforms
Thickness	ISO 10545-2	±5% ~ ±0.5mm	Conforms
Straightness	ISO 10545-2	±0.5% ~ ±1.5mm	Conforms
Flatness	ISO 10545-2	±0.5% ~ ±2.0mm	Conforms
Rectangularity	ISO 10545-2	±0.5% ~ ±2.0mm	Conforms
Water absorption	ISO 10545-3	Eb ≤ 0.5 %	< 0.5 %
Breaking strength	ISO 10545-4	≥ 1300N	> 10000 N
Modulus of rupture	ISO 10545-4	Ave Minimum 35 N/mm2	Ave min 35 N/mm2
Resistance to surface abrasion	ISO 10545-7	Declare Class	PEI 5
Thermal shock resistance	ISO 10545-9	Pass according to EN ISO 10545-1	Resistant
Frost resistance	ISO 10545-12	Pass according to EN ISO 10545-1	Resistant
Resistance to household chemicals and swimming pool salts	ISO 10545-13	Min Class GB	GA/GB
Resistance to high concentrations of alkalis and acids	ISO 10545-13	Declare Value	GHA/GLB
Resistance to low concentrations of alkalis and acids	ISO 10545-13	Declare Value	GHA/GHB
Resistance to stain	ISO 10545-14	Declare Value	Class 5
Reaction to fire	-	Class A1 A1/FL	A1 A1/FL

Slip resistance characteristics	Pendulum Dry (4S Slider 96 +36 PTV)	Pendulum Wet (4S Slider 96 +36 PTV)
Full range	✓	✓

The colour representations shown in this data sheet are as accurate as the limitations of the printing process will allow. Due to the manufacturing process of our floor tiles there may be a small variation in the PTV value. The slip resistance values are correct at the time of testing and represent the standard production value. Inadequate cleaning and maintenance will lead to significant reduction in the slip resistance of any tiles. The pendulum test results have been displayed in line with H&S Executive guidelines whereby 0-24 represents high slip potential, 25-35 moderate slip potential & 36+ represents a low slip potential

For further information contact: T: 0116 276 2532 – W: www.parkside.co.uk – E: info@parkside.co.uk

Strata Technical Tiles is the partner brand of Parkside Architectural Tiles

Vista20

60x90 & 60x120

GROUP / BLA - PORCELAIN

	Standard	Requirement	Established values
Length and width	ISO 10545-2	±0.6% ~ ±2mm	Conforms
Thickness	ISO 10545-2	±5% ~ ±0.5mm	Conforms
Straightness	ISO 10545-2	±0.5% ~ ±1.5mm	Conforms
Flatness	ISO 10545-2	±0.5% ~ ±2.0mm	Conforms
Rectangularity	ISO 10545-2	±0.5% ~ ±2.0mm	Conforms
Water absorption	ISO 10545-3	$E_w \leq 0.5\%$	Ave $\leq 0.5\%$
Breaking strength	ISO 10545-4	$\geq 1300N$	$\geq 1300N$
Modulus of rupture	ISO 10545-4	Ave Minimum 35 N/mm ²	Ave 35 N/mm ²
Resistance to deep abrasion (glazed tiles)	ISO 10545-7	Declare value	PEI
Thermal shock resistance	ISO 10545-9	Pass according to EN ISO 10545-1	Resistant
Frost resistance	ISO 10545-12	Pass according to EN ISO 10545-1	Resistant
Resistance to household chemicals and swimming pool salts	ISO 10545-13	Min Class GB	GA
Resistance to high concentrations of alkalis and acids	ISO 10545-13	Declare Value	GHA
Resistance to low concentrations of alkalis and acids	ISO 10545-13	Declare Value	GLA
Resistance to stain	ISO 10545-14	Declare Value	Class 4
Reaction to fire		Class A1 A1/FL	A1 A1/FL

Slip Resistance Characteristics	Pendulum Dry (4S Slider 96) +36	Pendulum Wet (4S Slider 96) +36
Full Range	✓	✓

The colour representations shown in this data sheet are as accurate as the limitations of the printing process will allow. Due to the manufacturing process of our floor tiles there may be a small variation in the PTV value. The slip resistance values are correct at the time of testing and represent the standard production value. Inadequate cleaning and maintenance will lead to significant reduction in the slip resistance of any tiles. The pendulum test results have been displayed in line with H&S Executive guidelines whereby 0-24 represents high slip potential, 25-35 moderate slip potential & 36+ represents a low slip potential.

For further information contact: T: 0116 276 2532 – W: www.parkside.co.uk – E: info@parkside.co.uk

Strata Technical Tiles is the partner brand of Parkside Architectural Tiles