

Blaker

3 COLOURS / 1 SIZES / 1 FINISHES / 0 SPECIAL PIECES

The Blaker collection is a beautiful patterned porcelain range made up of 3 statement patterns. The neutral colour palette lends itself well to most design schemes to create a beautiful, striking surface. This range has 36% recycled content.



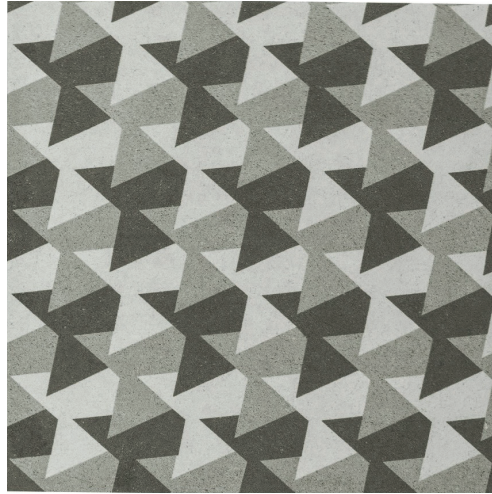
Blaker



Blaker



MAZE



SHARD



LINK

The colour representations shown in this data sheet are as accurate as the limitations of the printing process will allow. Due to the manufacturing process of our floor tiles there may be a small variation in the PTV value. The slip resistance values are correct at the time of testing and represent the standard production value. Inadequate cleaning and maintenance will lead to significant reduction in the slip resistance of any tiles. The pendulum test results have been displayed in line with H&S Executive guidelines whereby 0-24 represents high slip potential, 25-35 moderate slip potential & 36+ represents a low slip potential.

For further information contact: T: 0116 276 2532 – W: www.parkside.co.uk – E: info@parkside.co.uk

Strata Technical Tiles is the partner brand of Parkside Architectural Tiles



250x250

GROUP / Bla - PORCELAIN

	Standard	Requirement	Established values
Length and width	ISO 10545-2	$\pm 0.5\% \sim \pm 2\text{mm}$	Pass
Thickness	ISO 10545-2	$\pm 10\% \leq \pm 0.5\text{mm}$	Pass
Straightness	ISO 10545-2	$\pm 0.3\% \leq \pm 1.5\text{mm}$	Pass
Flatness	ISO 10545-2	$\pm 0.5\% \leq \pm 2.0\text{mm}$	Pass
Rectangularity	ISO 10545-2	$\pm 0.5\% \leq \pm 2.0\text{mm}$	Pass
Water absorption	ISO 10545-3	$E_b > 10\%$	Pass
Breaking strength	ISO 10545-4	$\geq 600\text{N}$	Pass
Modulus of rupture	ISO 10545-4	Average min 12 N/mm ²	Pass
Resistance to surface abrasion	ISO 10545-7	n/a	n/a
Thermal shock resistance	ISO 10545-9	Complies with standard	Pass
Frost resistance	ISO 10545-12	Complies with standard	Not resistant
Resistance to stain	ISO 10545-14	Min Class 3	Pass
Resistance to chemicals	ISO 10545-14	Min Class B	Pass
Reaction to fire	-	Floor/wall Class A1 A1/FL	A1 A1/FL

Dimensions	250x250x9mm
Finish	Matt
Body	Porcelain
Wall/floor	Wall abd floor
Group	BL _a
Pendulum Dry (4S)	TBC
Pendulum Wet (4S)	TBC
Pendulum Wet (TRL)	TBC
Recycled content	36%

The colour representations shown in this data sheet are as accurate as the limitations of the printing process will allow. Due to the manufacturing process of our floor tiles there may be a small variation in the PTV value. The slip resistance values are correct at the time of testing and represent the standard production value. Inadequate cleaning and maintenance will lead to significant reduction in the slip resistance of any tiles. The pendulum test results have been displayed in line with H&S Executive guidelines whereby 0-24 represents high slip potential, 25-35 moderate slip potential & 36+ represents a low slip potential.

For further information contact: T: 0116 276 2532 – W: www.parkside.co.uk – E: info@parkside.co.uk

Strata Technical Tiles is the partner brand of Parkside Architectural Tiles