

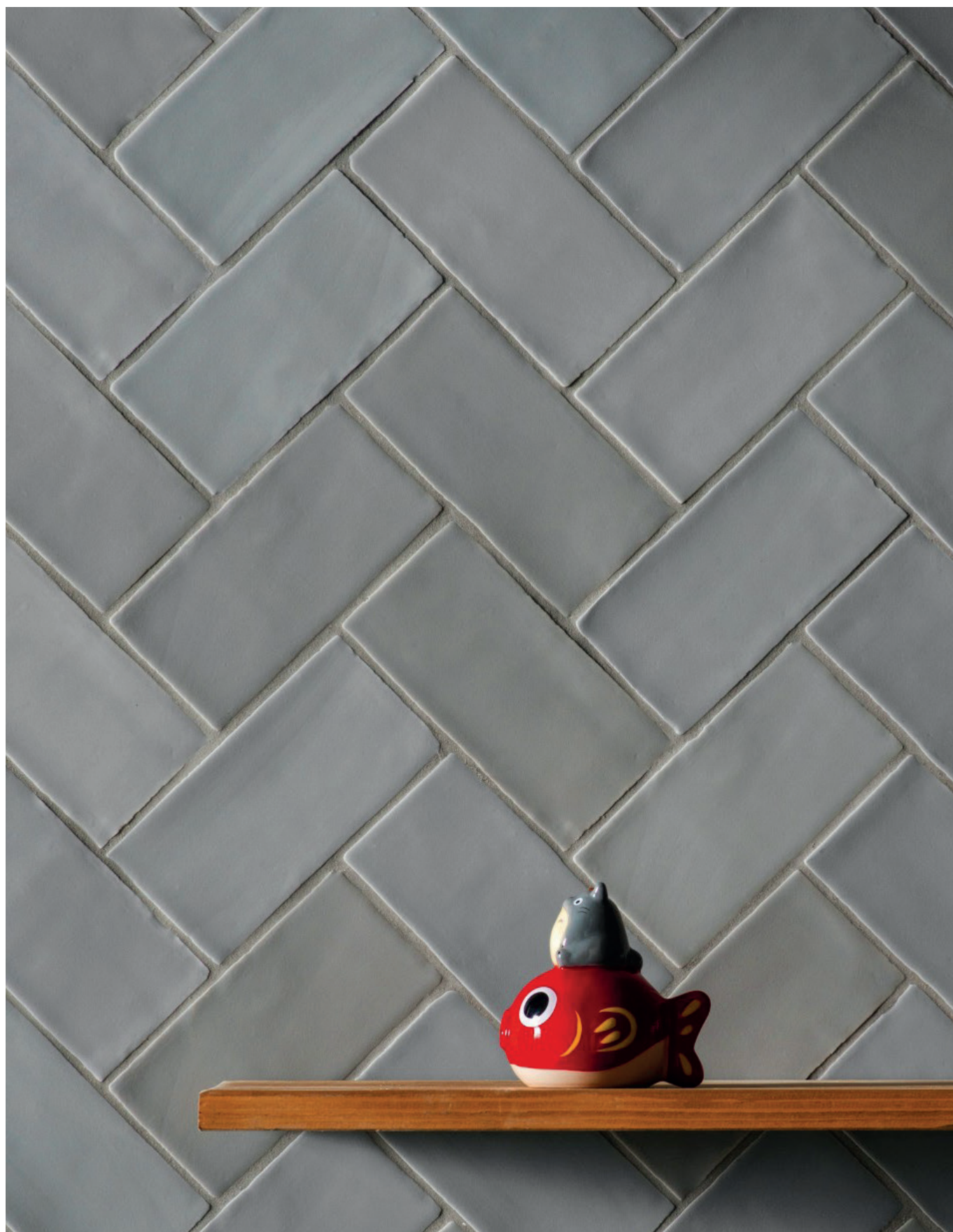
# Carlow Wall

3 COLOURS / 1 SIZES / 2 FINISHES / 0 SPECIAL PIECES

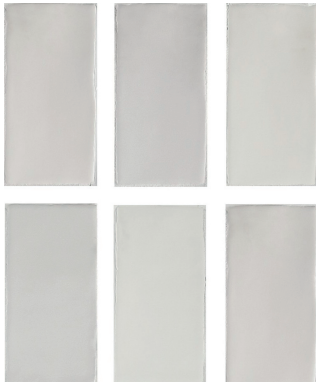
With its variation of subtle shades within each colourway, Carlow Wall is available in 3 colours and a matt or glossy finish. Match it up with Carlow Floor. This range contains 0% recycled content.



Carlow Wall



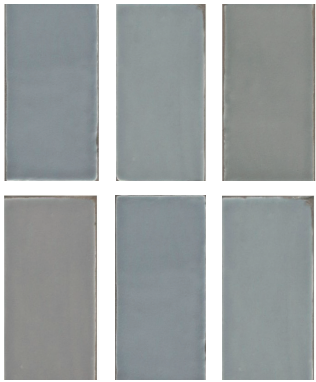
# Carlow Wall



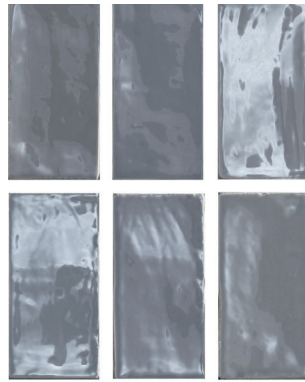
WHITE MATT



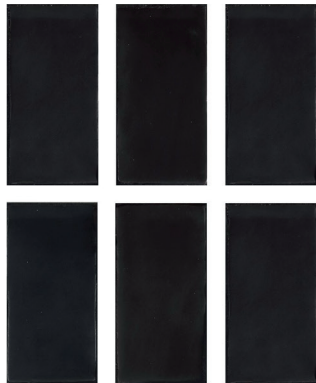
WHITE GLOSS



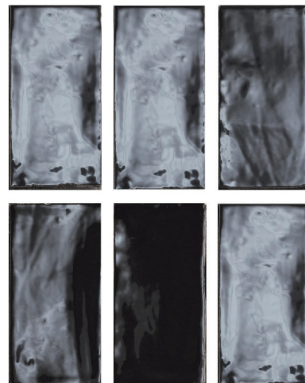
GREY MATT



GREY GLOSS



BLACK MATT



BLACK GLOSS

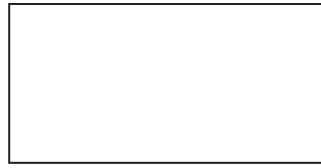
Porcelain	10mm thick		Wall/floor
	Gloss	Matt	All tiles
75x150	✓	✓	Wall

The colour representations shown in this data sheet are as accurate as the limitations of the printing process will allow. Due to the manufacturing process of our floor tiles there may be a small variation in the PTV value. The slip resistance values are correct at the time of testing and represent the standard production value. Inadequate cleaning and maintenance will lead to significant reduction in the slip resistance of any tiles. The pendulum test results have been displayed in line with H&S Executive guidelines whereby 0-24 represents high slip potential, 25-35 moderate slip potential & 36+ represents a low slip potential.

For further information contact: T: 0116 276 2532 – W: [www.parkside.co.uk](http://www.parkside.co.uk) – E: [info@parkside.co.uk](mailto:info@parkside.co.uk)

Strata Technical Tiles is the partner brand of Parkside Architectural Tiles

# Carlow Wall



75X150

## GROUP / BLa - PORCELAIN

	Standard	Requirement	Established values
Length and width	ISO 10545-2	±0.5% ~ ±2mm	Conforms
Thickness	ISO 10545-2	±10% ~ ±0.5mm	Conforms
Straightness	ISO 10545-2	±0.5% ~ ±1.5mm	Conforms
Flatness	ISO 10545-2	±0.5% ~ ±2.0mm	Conforms
Rectangularity	ISO 10545-2	±0.5% ~ ±2.0mm	Conforms
Water absorption	ISO 10545-3	$E_b \leq 10\%$	Ave >10%
Breaking strength	ISO 10545-4	≥ 600N	Ave ≥ 600N
Modulus of rupture	ISO 10545-4	Ave min 12 N/mm <sup>2</sup>	Ave 12 N/mm <sup>2</sup>
Thermal shock resistance	ISO 10545-1	Pass according to EN ISO 10545-1	Resistant
Resistance to household chemicals and swimming pool salts	ISO 10545-13	Min Class GB	GA
Resistance to high concentrations of alkalis and acids	ISO 10545-13	Declare Value	GHB
Resistance to low concentrations of alkalis and acids	ISO 10545-13	Declare Value	GLA
Resistance to stain	ISO 10545-14	Declare Value	Class 4
Reaction to fire	-	Class A1 A1/FL	A1 A1/FL

Recycled content	%
Carlow Wall	0

The colour representations shown in this data sheet are as accurate as the limitations of the printing process will allow. Due to the manufacturing process of our floor tiles there may be a small variation in the PTV value. The slip resistance values are correct at the time of testing and represent the standard production value. Inadequate cleaning and maintenance will lead to significant reduction in the slip resistance of any tiles. The pendulum test results have been displayed in line with H&S Executive guidelines whereby 0-24 represents high slip potential, 25-35 moderate slip potential & 36+ represents a low slip potential.

For further information contact: T: 0116 276 2532 – W: [www.parkside.co.uk](http://www.parkside.co.uk) – E: [info@parkside.co.uk](mailto:info@parkside.co.uk)

Strata Technical Tiles is the partner brand of Parkside Architectural Tiles