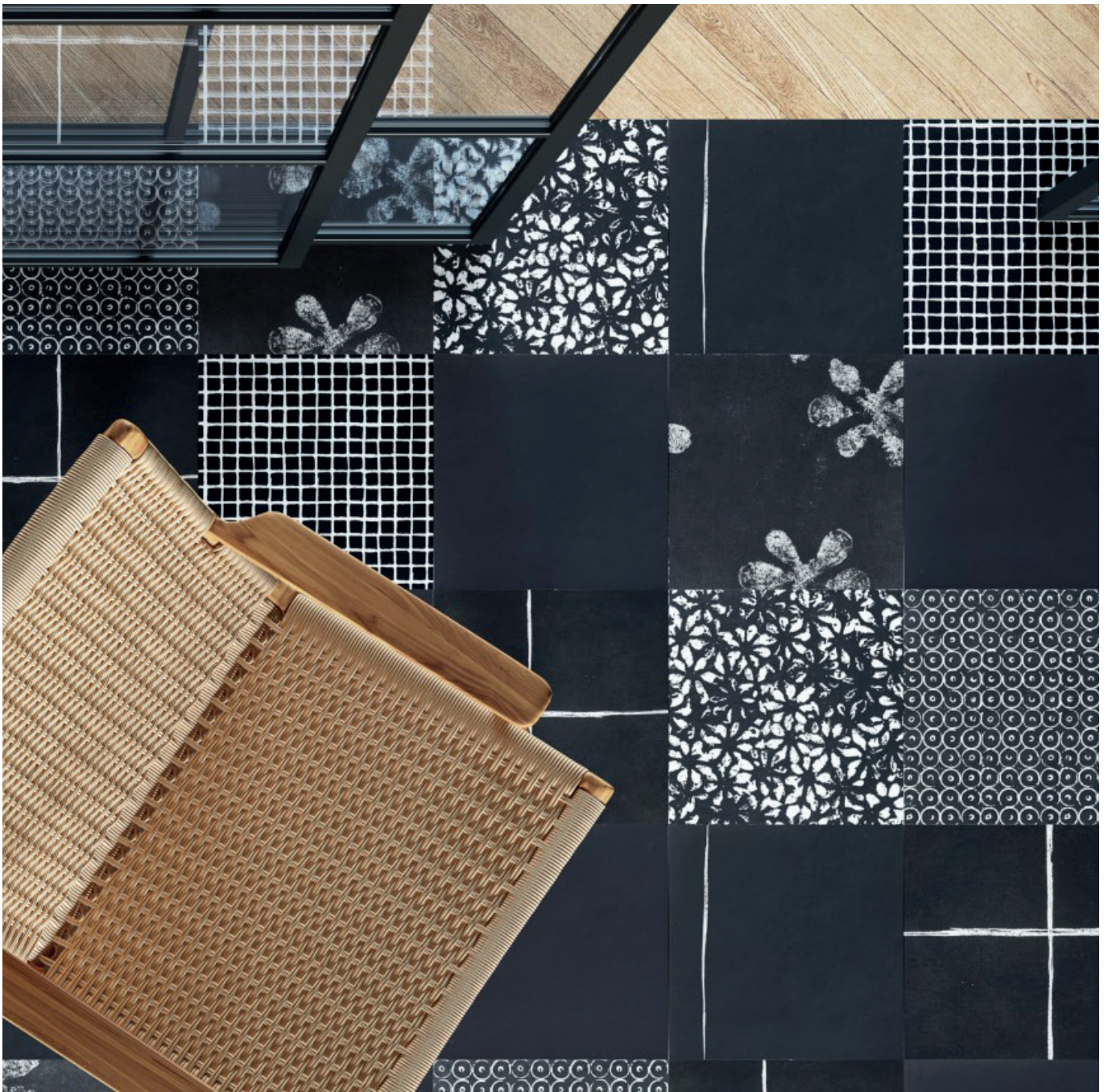


Chymia

2 COLOURS / 1 SIZES / 1 FINISHES / 0 SPECIAL PIECES

Exclusive to Parkside in the UK, the new Chymia patterned tiles collection by Mutina is the result of a collaboration with Laboratorio Avallone, Milano-based studio led by Gennaro Avallone, whose research reaches into the applied arts, drawing on the arts of painting and sculpture to create unique and very special objects of contemporary furnishing. The collection consists of a series that fluctuates between the discipline of graphic design and the expressive gestures of mark-making as well as between the two extremes of black and white, in which symbols and textures are combined to create patterns of light and shadow on the surface. This range has 20% recycled content.

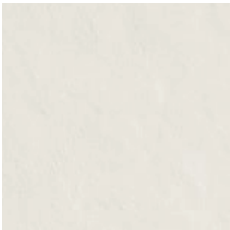


Chymia

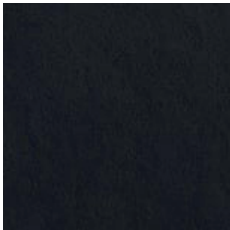




Chymia



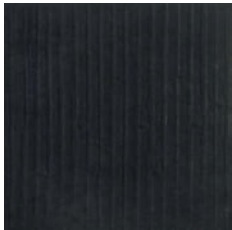
FLAT WHITE



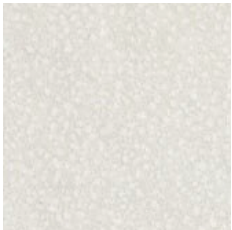
FLAT BLACK



RIGO WHITE



RIGO BLACK



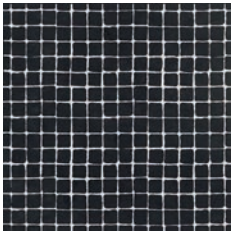
FROST WHITE



FROST BLACK



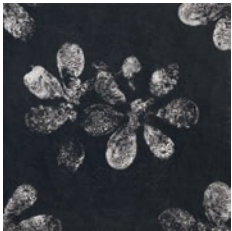
TASSELLO WHITE



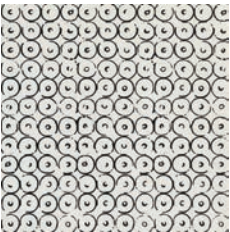
TASSELLO BLACK



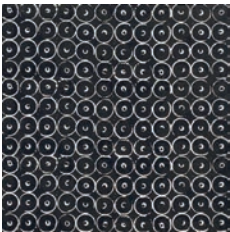
OPHELIA WHITE



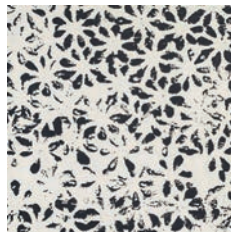
OPHELIA WHITE



COSMO WHITE



COSMO BLACK



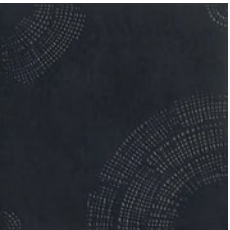
BLOOM WHITE



BLOOM BLACK



DROPS WHITE



DROPS BLACK



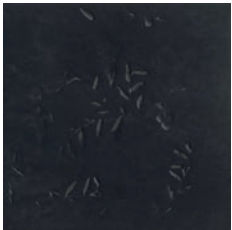
JUTA WHITE



JUTA BLACK



IMPRONTA WHITE



IMPRONTA BLACK



TEOREMA WHITE



TEOREMA BLACK

Chymia

GROUP / Bla - PORCELAIN

	Standard	Requirement	Established values
Length and width	ISO 10545-2	$\pm 0.6\% \sim \pm 2\text{mm}$	Conforms
Thickness	ISO 10545-2	$\pm 5\% \sim \pm 0.5\text{mm}$	Conforms
Straightness	ISO 10545-2	$\pm 0.5\% \sim \pm 1.5\text{mm}$	Conforms
Flatness	ISO 10545-2	$\pm 0.5\% \sim \pm 2.0\text{mm}$	Conforms
Rectangularity	ISO 10545-2	$\pm 0.5\% \sim \pm 2.0\text{mm}$	Conforms
Water absorption	ISO 10545-3	$E_b \leq 0.5\%$	Ave 0.06%
Breaking strength	ISO 10545-4	$\geq 1300\text{N}$	$\geq 1300\text{N}$
Modulus of rupture	ISO 10545-4	Ave Minimum 35 N/mm ²	Ave min 35 N/mm ²
Resistance to surface abrasion	ISO 10545-7	Declare Class	All White colours – PEI 4 Tassello Black, Cosma Black & Bloom Black – PEI 3 Flat, Frost, Yuta, Ophelia, Rigo, Drops, Impronta, Teorema, Tassello Black – PEI 2
Thermal shock resistance	ISO 10545-9	Pass according to EN ISO 10545-1	Resistant
Frost resistance	ISO 10545-12	Pass according to EN ISO 10545-1	Resistant
Resistance to household chemicals and swimming pool salts	ISO 10545-13	Min Class GB	GA
Resistance to high concentrations of alkalis and acids	ISO 10545-13	Declare Value	GHA
Resistance to low concentrations of alkalis and acids	ISO 10545-13	Declare Value	NPD
Resistance to stain	ISO 10545-14	Declare Value	Class 3
Reaction to fire	-	Class A1 A1/FL	A1 A1/FL

Porcelain	10mm thick	Wall/floor	Interior/exterior
	Matt	All tiles	All tiles
300X300	✓	Wall/floor	Interior/exterior

Recycled content	%
Chymia	20

The colour representations shown in this data sheet are as accurate as the limitations of the printing process will allow. Due to the manufacturing process of our floor tiles there may be a small variation in the PTV value. The slip resistance values are correct at the time of testing and represent the standard production value. Inadequate cleaning and maintenance will lead to significant reduction in the slip resistance of any tiles. The pendulum test results have been displayed in line with H&S Executive guidelines whereby 0-24 represents high slip potential, 25-35 moderate slip potential & 36+ represents a low slip potential.

For further information contact: T: 0116 276 2532 – W: www.parkside.co.uk – E: info@parkside.co.uk

Strata Technical Tiles is the partner brand of Parkside Architectural Tiles