

Cunard

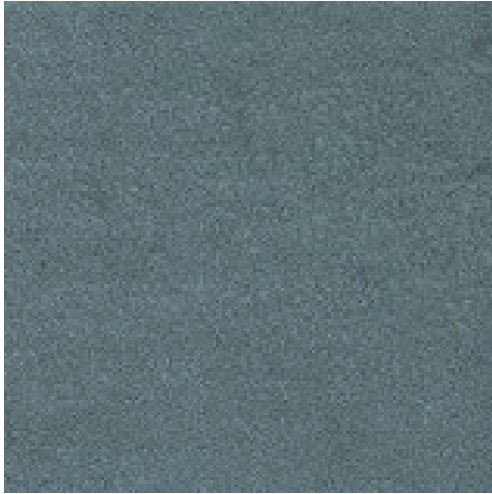
3 COLOURS / 1 SIZES / 1 FINISHES / 0 SPECIAL PIECES

Cunard is a glazed porcelain range and features a subtle polished finish to create an enamel effect. The colours in this range give a nautical feel of an ocean liner with blue, pale grey and white. This range contains 10% recycled content.





Cunard



BLUE



GREY



WHITE

The colour representations shown in this data sheet are as accurate as the limitations of the printing process will allow. Due to the manufacturing process of our floor tiles there may be a small variation in the PTV value. The slip resistance values are correct at the time of testing and represent the standard production value. Inadequate cleaning and maintenance will lead to significant reduction in the slip resistance of any tiles. The pendulum test results have been displayed in line with H&S Executive guidelines whereby 0-24 represents high slip potential, 25-35 moderate slip potential & 36+ represents a low slip potential.

For further information contact: T: 0116 276 2532 – W: www.parkside.co.uk – E: info@parkside.co.uk

Strata Technical Tiles is the partner brand of Parkside Architectural Tiles

Cunard



70X280

Dimensions	70X280X9mm
Finish	Semi polished
Body	Porcelain
Wall/floor	Wall
Group	BI _a
Pendulum Dry	–
Pendulum Wet	–
Recycled content	10%

Range	Standard	Requirement	Typical test value
Length and width	ISO 10545-2	±0.6% ~ ±2mm	Pass
Thickness	ISO 10545-2	±5% ≤ ±0.5mm	Pass
Straightness	ISO 10545-2	±0.5% ≤ ±1.5mm	Pass
Flatness	ISO 10545-2	±0.5% ≤ ±2.0mm	Pass
Rectangularity	ISO 10545-2	±0.5% ≤ ±2.0mm	Pass
Water absorption	ISO 10545-3	$E_w \leq 0.5\%$	Pass
Breaking strength	ISO 10545-4	≥ 1300N	Pass
Modulus of rupture	ISO 10545-4	35 N/mm ² Average min	Pass
Resistance to surface abrasion	ISO 10545-7	n/a	n/a
Frost resistance	ISO 10545-12	Complies with standard	Not resistant
Thermal shock resistance	ISO 10545-9	Complies with standard	Pass
Resistance to stain	ISO 10545-14	Min Class 3	Pass
Resistance to chemicals	ISO 10545-14	Min Class B	Pass
Reaction to fire	-	Floor/wall Class A1 FL/A1	Pass

The colour representations shown in this data sheet are as accurate as the limitations of the printing process will allow. Due to the manufacturing process of our floor tiles there may be a small variation in the PTV value. The slip resistance values are correct at the time of testing and represent the standard production value. Inadequate cleaning and maintenance will lead to significant reduction in the slip resistance of any tiles. The pendulum test results have been displayed in line with H&S Executive guidelines whereby 0-24 represents high slip potential, 25-35 moderate slip potential & 36+ represents a low slip potential.

For further information contact: T: 0116 276 2532 – W: www.parkside.co.uk – E: info@parkside.co.uk

Strata Technical Tiles is the partner brand of Parkside Architectural Tiles