

Estelle

8 COLOURS / **4** SIZES / **1** FINISHES / **0** SPECIAL PIECES

Estelle welcomes colour to 6mm porcelain tiles: eight pastel shades designed to create vibrant and balanced compositions, in perfect harmony with each other and their surroundings. From dusty Fifties-inspired shades, such as milk, taupe, hazelnut, pink, straw and sky blue to the bolder hues of dusty grey and moss green, all perfectly suited to creating environments with a retro vibe and a contemporary character. The colours in the collection may be combined together or used independently.



Estelle

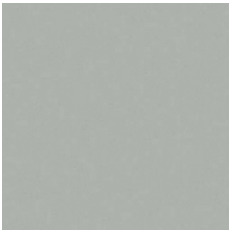




Estelle



HAZELNUT



OLD LACE



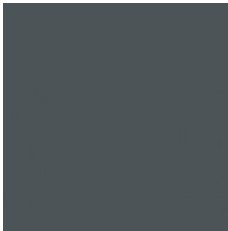
PRIMROSE



BUTTER



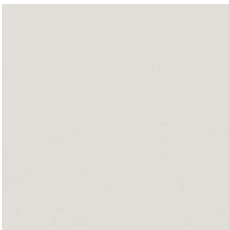
SKYLINE



MIST



MOSS



MILK

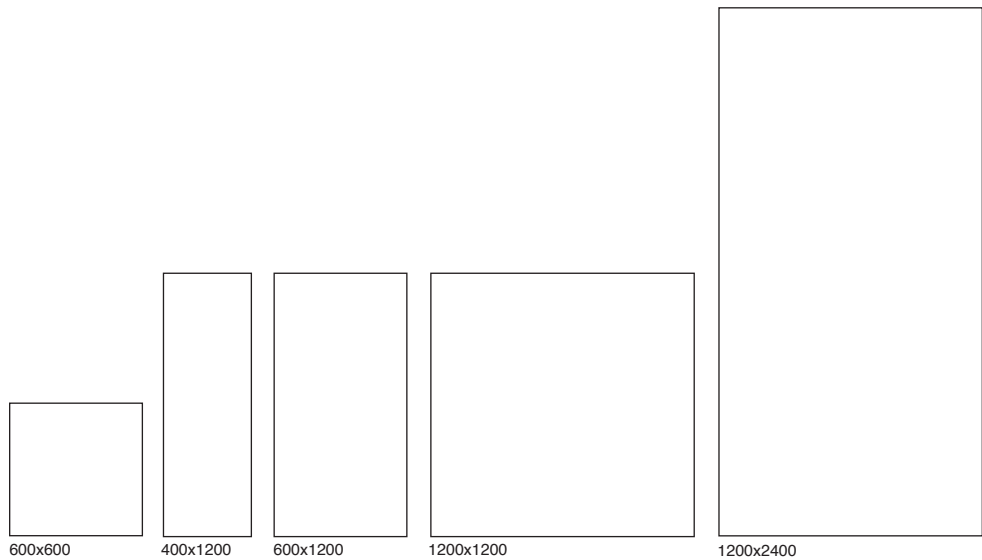
Porcelain	6mm thick	Wall/floor	Interior/exterior
	Natural	All tiles	All tiles
1200x1200	✓	Wall	Interior
1200x2400	✓	Wall	Interior
400x1200	✓	Wall	Interior
600x1200	✓	Wall	Interior

The colour representations shown in this data sheet are as accurate as the limitations of the printing process will allow. Due to the manufacturing process of our floor tiles there may be a small variation in the PTV value. The slip resistance values are correct at the time of testing and represent the standard production value. Inadequate cleaning and maintenance will lead to significant reduction in the slip resistance of any tiles. The pendulum test results have been displayed in line with H&S Executive guidelines whereby 0-24 represents high slip potential, 25-35 moderate slip potential & 36+ represents a low slip potential.

For further information contact: T: 0116 276 2532 – W: www.parkside.co.uk – E: info@parkside.co.uk

Strata Technical Tiles is the partner brand of Parkside Architectural Tiles

Estelle



GROUP / Bla - PORCELAIN

	Standard	Requirement	Established values
Length and width	ISO 10545-2	±0.6% ~ ±2mm	Conforms
Thickness	ISO 10545-2	±5% ~ ±0.5mm	Conforms
Straightness	ISO 10545-2	±0.5% ~ ±1.5mm	Conforms
Flatness	ISO 10545-2	±0.5% ~ ±2.0mm	Conforms
Rectangularity	ISO 10545-2	±0.5% ~ ±2.0mm	Conforms
Water absorption	ISO 10545-3	$E_b \leq 0.5\%$	Ave < 0.08%
Breaking strength	ISO 10545-4	≥ 1300N	Ave ≥ 1350N
Modulus of rupture	ISO 10545-4	Ave Minimum 35 N/mm ²	Ave min 52 N/mm ²
Resistance to surface abrasion (unglazed tiles)	ISO 10545-6	<175mm ²	<140mm ³
Thermal shock resistance	ISO 10545-9	Pass according to EN ISO 10545-1	Resistant
Frost resistance	ISO 10545-12	Pass according to EN ISO 10545-1	Resistant
Resistance to household chemicals and swimming pool salts	ISO 10545-13	Min Class UB	UA
Resistance to high concentrations of alkalis and acids	ISO 10545-13	Declare Value	NPD
Resistance to low concentrations of alkalis and acids	ISO 10545-13	Declare Value	ULB
Resistance to stain	ISO 10545-14	Declare Value	Class 5
Reaction to fire	-	Class A1 A1/FL	A1 A1/FL

Recycled content	%
Milk	0
All other items	7

The colour representations shown in this data sheet are as accurate as the limitations of the printing process will allow. Due to the manufacturing process of our floor tiles there may be a small variation in the PTV value. The slip resistance values are correct at the time of testing and represent the standard production value. Inadequate cleaning and maintenance will lead to significant reduction in the slip resistance of any tiles. The pendulum test results have been displayed in line with H&S Executive guidelines whereby 0-24 represents high slip potential, 25-35 moderate slip potential & 36+ represents a low slip potential.

For further information contact: T: 0116 276 2532 – W: www.parkside.co.uk – E: info@parkside.co.uk

Strata Technical Tiles is the partner brand of Parkside Architectural Tiles