

Fyne Tartan

1 COLOURS / 1 SIZES / 1 FINISHES / 0 SPECIAL PIECES

Taking inspiration from the tartan mills of Scotland, Fyne Tartan will make a serious statement to any interior. Try combining it with the beautiful Fyne Soft or Fyne Plain.



Fyne Tartan

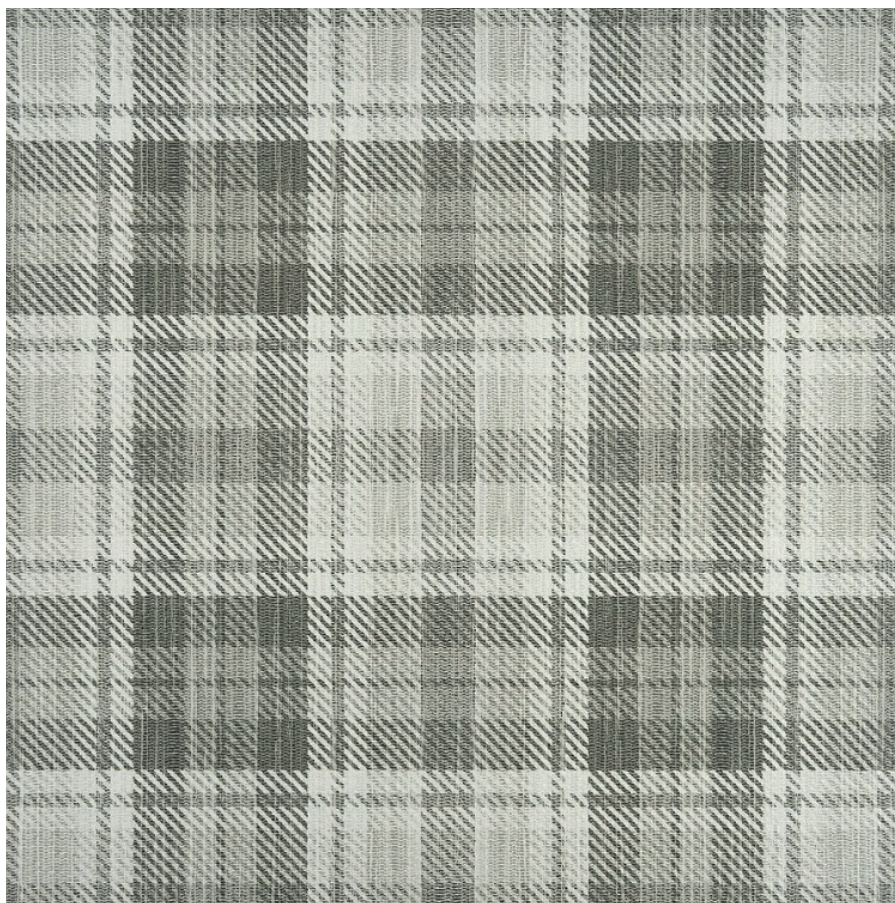


The colour representations shown in this data sheet are as accurate as the limitations of the printing process will allow. Due to the manufacturing process of our floor tiles there may be a small variation in the PTV value. The slip resistance values are correct at the time of testing and represent the standard production value. Inadequate cleaning and maintenance will lead to significant reduction in the slip resistance of any tiles. The pendulum test results have been displayed in line with H&S Executive guidelines whereby 0-24 represents high slip potential, 25-35 moderate slip potential & 36+ represents a low slip potential.

For further information contact: T: 0116 276 2532 – W: www.parkside.co.uk – E: info@parkside.co.uk

Strata Technical Tiles is the partner brand of Parkside Architectural Tiles

Fyne Tartan



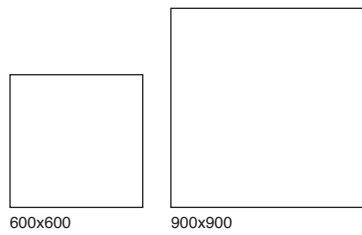
Porcelain	10mm thick	Wall/floor
	Structured	All tiles
900x900	✓	Wall & floor
600x600	✓	Wall & floor

The colour representations shown in this data sheet are as accurate as the limitations of the printing process will allow. Due to the manufacturing process of our floor tiles there may be a small variation in the PTV value. The slip resistance values are correct at the time of testing and represent the standard production value. Inadequate cleaning and maintenance will lead to significant reduction in the slip resistance of any tiles. The pendulum test results have been displayed in line with H&S Executive guidelines whereby 0-24 represents high slip potential, 25-35 moderate slip potential & 36+ represents a low slip potential.

For further information contact: T: 0116 276 2532 – W: www.parkside.co.uk – E: info@parkside.co.uk

Strata Technical Tiles is the partner brand of Parkside Architectural Tiles

Fyne Tartan



GROUP / BLA - PORCELAIN

	Standard	Requirement	Established values
Length and width	ISO 10545-2	±0.6% ~ ±2mm	Conforms
Thickness	ISO 10545-2	±5% ~ ±0.5mm	Conforms
Straightness	ISO 10545-2	±0.5% ~ ±1.5mm	Conforms
Flatness	ISO 10545-2	±0.5% ~ ±2.0mm	Conforms
Rectangularity	ISO 10545-2	±0.5% ~ ±2.0mm	Conforms
Water absorption	ISO 10545-3	$E_b > 0.5\%$	Ave ≤ 0.1%
Breaking strength	ISO 10545-4	≥ 1300N	≥ 1300N
Modulus of rupture	ISO 10545-4	Ave min 35 N/mm ²	Ave 45 N/mm ²
Resistance to surface abrasion	ISO 10545-7	Declare Class	Grey & Brown - PEI 4 Light, Sand and Taupe - PEI 5
Thermal shock resistance	ISO 10545-9	Pass according to EN ISO 10545-1	Resistant
Frost resistance	ISO 10545-12	Pass according to EN ISO 10545-1	Resistant
Resistance to household chemicals and swimming pool salts	ISO 10545-13	Min Class GB	Class GB
Resistance to high concentrations of alkalis and acids	ISO 10545-13	Declare Value	NPD
Resistance to low concentrations of alkalis and acids	ISO 10545-13	Declare Value	NPD
Resistance to stain	ISO 10545-14	Declare Value	Class 3
Reaction to fire	-	Class A1 A1/FL	A1 A1/FL

Recycled content	%
Fyne Plain	20-29

The colour representations shown in this data sheet are as accurate as the limitations of the printing process will allow. Due to the manufacturing process of our floor tiles there may be a small variation in the PTV value. The slip resistance values are correct at the time of testing and represent the standard production value. Inadequate cleaning and maintenance will lead to significant reduction in the slip resistance of any tiles. The pendulum test results have been displayed in line with H&S Executive guidelines whereby 0-24 represents high slip potential, 25-35 moderate slip potential & 36+ represents a low slip potential.

For further information contact: T: 0116 276 2532 – W: www.parkside.co.uk – E: info@parkside.co.uk

Strata Technical Tiles is the partner brand of Parkside Architectural Tiles