

Lido

6 COLOURS / **5** SIZES / **3** FINISHES / **0** SPECIAL PIECES

Lido is a beautiful, technical porcelain collection. Lido has rectified edges and subtle variation within the design with good anti slip properties. Featuring multiple finishes, sizes and colours there is no limit to its capabilities. This range has 43% recycled content.



Lido





Lido



WHITE MATT



WHITE SEMI POLISHED



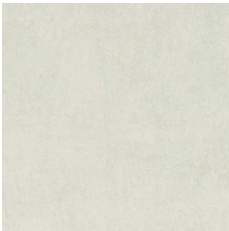
WHITE SOFT



BONE MATT



BONE SEMI POLISHED



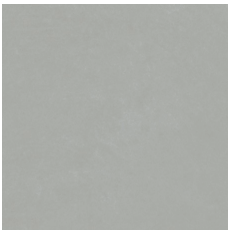
BONE SOFT



SILVER MATT



SILVER SEMI POLISHED



SILVER SOFT



MUD MATT



MUD SEMI-POLISHED



MUD SOFT



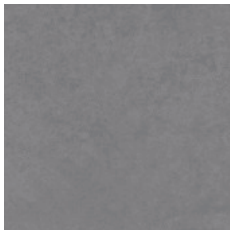
GREY MATT



GREY SEMI POLISHED



GREY SOFT



ANTHRACITE MATT



ANTHRACITE
SEMI POLISHED



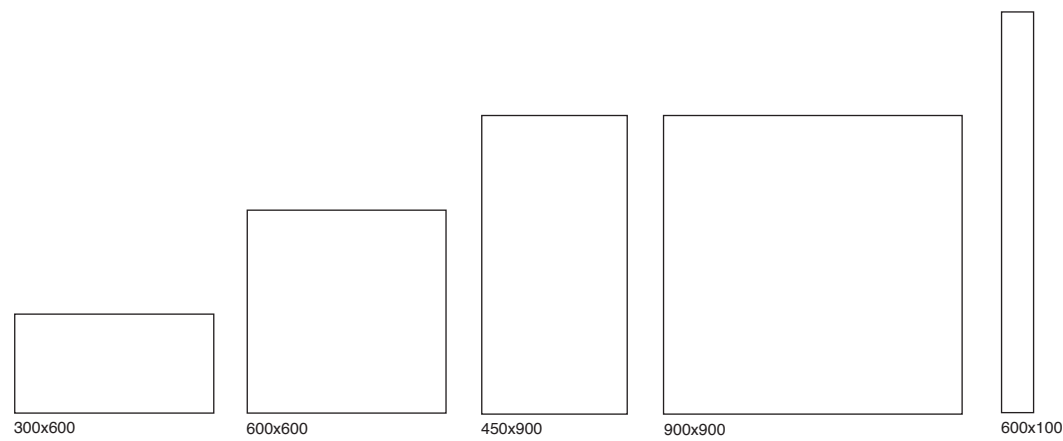
ANTHRACITE SOFT

The colour representations shown in this data sheet are as accurate as the limitations of the printing process will allow. Due to the manufacturing process of our floor tiles there may be a small variation in the PTV value. The slip resistance values are correct at the time of testing and represent the standard production value. Inadequate cleaning and maintenance will lead to significant reduction in the slip resistance of any tiles. The pendulum test results have been displayed in line with H&S Executive guidelines whereby 0-24 represents high slip potential, 25-35 moderate slip potential & 36+ represents a low slip potential.

For further information contact: T: 0116 276 2532 – W: www.parkside.co.uk – E: info@parkside.co.uk

Strata Technical Tiles is the partner brand of Parkside Architectural Tiles

Lido



Dimensions	Multiple
Finish	Multiple
Body	Porcelain
Wall/floor	Wall and floor
Group	BI _a
Pendulum Dry	36+
Pendulum Wet	24-35

The colour representations shown in this data sheet are as accurate as the limitations of the printing process will allow. Due to the manufacturing process of our floor tiles there may be a small variation in the PTV value. The slip resistance values are correct at the time of testing and represent the standard production value. Inadequate cleaning and maintenance will lead to significant reduction in the slip resistance of any tiles. The pendulum test results have been displayed in line with H&S Executive guidelines whereby 0-24 represents high slip potential, 25-35 moderate slip potential & 36+ represents a low slip potential.

For further information contact: T: 0116 276 2532 – W: www.parkside.co.uk – E: info@parkside.co.uk

Strata Technical Tiles is the partner brand of Parkside Architectural Tiles

Lido

GROUP / Bla - PORCELAIN

	Standard	Requirement	Established values
Length and width	ISO 10545-2	$\pm 0.6\% \sim \pm 2\text{mm}$	Conforms
Thickness	ISO 10545-2	$\pm 5\% \sim \pm 0.5\text{mm}$	Conforms
Straightness	ISO 10545-2	$\pm 0.5\% \sim \pm 1.5\text{mm}$	Conforms
Flatness	ISO 10545-2	$\pm 0.5\% \sim \pm 2.0\text{mm}$	Conforms
Rectangularity	ISO 10545-2	$\pm 0.5\% \sim \pm 2.0\text{mm}$	Conforms
Water absorption	ISO 10545-3	$E_b \leq 0.5\%$	Ave $\leq 0.5\%$
Breaking strength	ISO 10545-4	$\geq 1300\text{N}$	Ave 1300N
Modulus of rupture	ISO 10545-4	Ave Minimum 35 N/mm ²	Ave min 35 N/mm ²
Resistance to surface abrasion	ISO 10545-7	Declare Class	PEI 4
Thermal shock resistance	ISO 10545-9	Pass according to EN ISO 10545-1	Resistant
Frost resistance	ISO 10545-12	Pass according to EN ISO 10545-1	Resistant
Resistance to household chemicals and swimming pool salts	ISO 10545-13	Min Class GB	GB
Resistance to high concentrations of alkalis and acids	ISO 10545-13	Declare Value	GHA
Resistance to low concentrations of alkalis and acids	ISO 10545-13	Declare Value	NPD
Resistance to stain	ISO 10545-14	Declare Value	Class 5
Reaction to fire	-	Class A1 A1/FL	A1 A1/FL

Slip resistance characteristics	Pendulum Dry (4S Slider 96) +36 PTV	Pendulum Wet (4S Slider 96) +36 PTV
Grip finish 20mm	✓	✓

Recycled content	%
Lido	43

The colour representations shown in this data sheet are as accurate as the limitations of the printing process will allow. Due to the manufacturing process of our floor tiles there may be a small variation in the PTV value. The slip resistance values are correct at the time of testing and represent the standard production value. Inadequate cleaning and maintenance will lead to significant reduction in the slip resistance of any tiles. The pendulum test results have been displayed in line with H&S Executive guidelines whereby 0-24 represents high slip potential, 25-35 moderate slip potential & 36+ represents a low slip potential.

For further information contact: T: 0116 276 2532 – W: www.parkside.co.uk – E: info@parkside.co.uk

Strata Technical Tiles is the partner brand of Parkside Architectural Tiles