

Orta

12 COLOURS / 1 SIZES / 1 FINISHES / 0 SPECIAL PIECES

Introducing Orta, an elegant, luxurious range of bold, abstract colours and patterns. Each piece can be combined to make wall art or used on it's own to create a dramatic effect. There's a choice of 12 different patterns, all available in 500x1000mm and just 3.5mm thick. Welcoming our two new additions Olivia and Marcela.



Orta



Orta



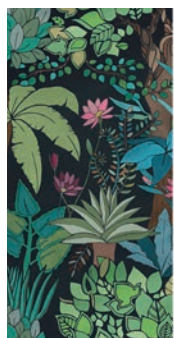
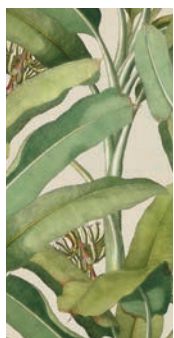
Orta



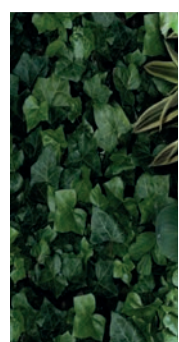
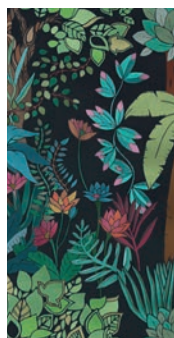
SILVI



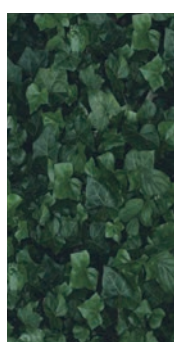
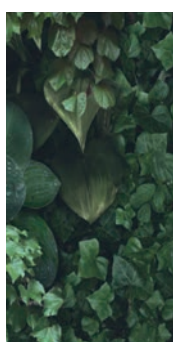
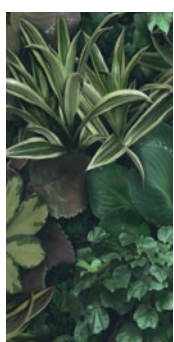
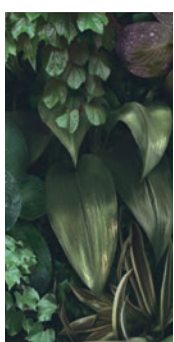
MUSA



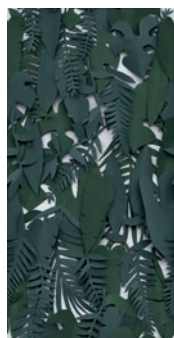
FLORA



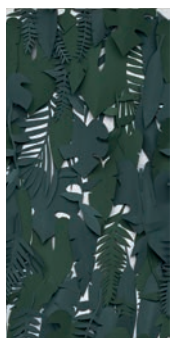
JANE



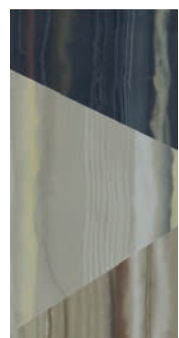
EVA



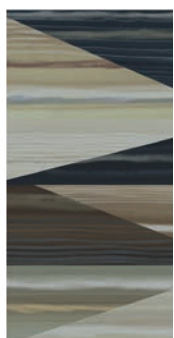
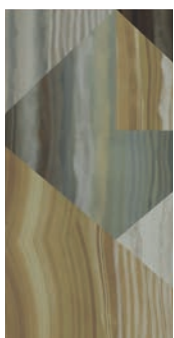
MIDORI



LUZ



ELSA



Orta



OLIVIA



MARCELA



PAZ



LOLA

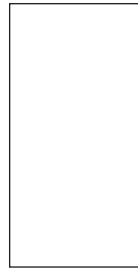
Dimensions	500X1000
Finish	Matt
Body	Porcelain
Wall/floor	Wall
Group	Bl _a
Pendulum Dry (4S)	36+
Pendulum Wet (4S)	n/a
Recycled content (TRL)	n/a

The colour representations shown in this data sheet are as accurate as the limitations of the printing process will allow. Due to the manufacturing process of our floor tiles there may be a small variation in the PTV value. The slip resistance values are correct at the time of testing and represent the standard production value. Inadequate cleaning and maintenance will lead to significant reduction in the slip resistance of any tiles. The pendulum test results have been displayed in line with H&S Executive guidelines whereby 0-24 represents high slip potential, 25-35 moderate slip potential & 36+ represents a low slip potential.

For further information contact: T: 0116 276 2532 – W: www.parkside.co.uk – E: info@parkside.co.uk

Strata Technical Tiles is the partner brand of Parkside Architectural Tiles

Orta



500X1000

GROUP / Bla - PORCELAIN

	Standard	Requirement	Established values
Length and width	ISO 10545-2	$\pm 0.6\% \sim \leq 2\text{mm}$	Pass
Thickness	ISO 10545-2	$\pm 5\% \leq \pm 0.5\text{mm}$	Pass
Straightness	ISO 10545-2	$\pm 0.5\% \leq \pm 1.5\text{mm}$	Pass
Flatness	ISO 10545-2	$\pm 0.5\% \leq \pm 2.0\text{mm}$	Pass
Rectangularity	ISO 10545-2	$\pm 0.5\% \leq \pm 2.0\text{mm}$	Pass
Water absorption	ISO 10545-3	$E_b \leq 0.5\%$	Pass
Breaking strength	ISO 10545-4	$\geq 1300\text{N}$	Pass
Modulus of rupture	ISO 10545-4	Ave Minimum 35 N/mm ²	Pass
Resistance to surface abrasion	ISO 10545-7	n/a	NPD
Frost resistance	ISO 10545-12	Complies with standard	NPD
Thermal shock resistance	ISO 10545-9	Complies with standard	Pass
Resistance to stain	ISO 10545-14	Min Class 3	Pass
Resistance to chemicals	ISO 10545-14	Min Class B	NPD
Reaction to fire	-	Floor/wall Class A1 A1/FL	Pass

Sizes available	Recycled content	%
500x1000	Orta	0

The colour representations shown in this data sheet are as accurate as the limitations of the printing process will allow. Due to the manufacturing process of our floor tiles there may be a small variation in the PTV value. The slip resistance values are correct at the time of testing and represent the standard production value. Inadequate cleaning and maintenance will lead to significant reduction in the slip resistance of any tiles. The pendulum test results have been displayed in line with H&S Executive guidelines whereby 0-24 represents high slip potential, 25-35 moderate slip potential & 36+ represents a low slip potential.

For further information contact: T: 0116 276 2532 – W: www.parkside.co.uk – E: info@parkside.co.uk

Strata Technical Tiles is the partner brand of Parkside Architectural Tiles