

Phenomenon

4 COLOURS / 2 SIZES / 1 FINISHES / 0 SPECIAL PIECES

Designed by Tokujin Yoshioka for Mutina, the Phenomenon collection combines small elements, inspired by textures from the natural world, to add depth to any wall.



Phenomenon



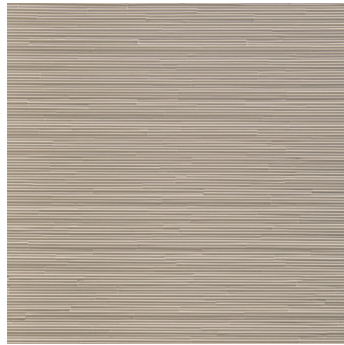
Phenomenon



Phenomenon



RAIN B BIANCO



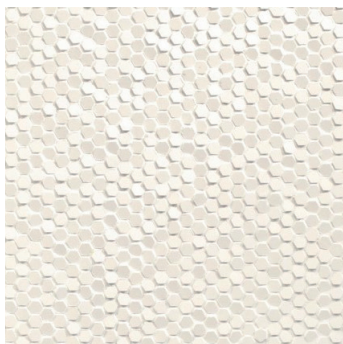
RAIN B GRIGIO



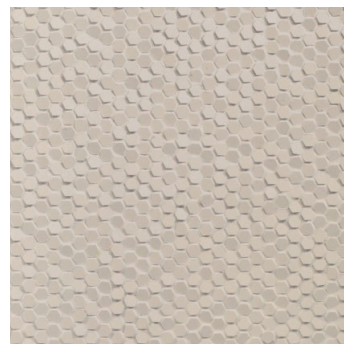
RAIN B FANGO



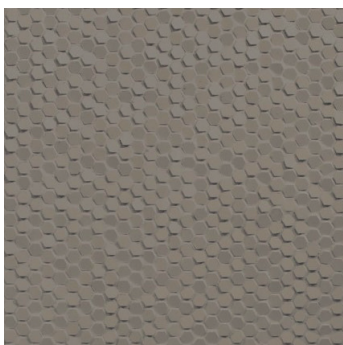
RAIN B NERO



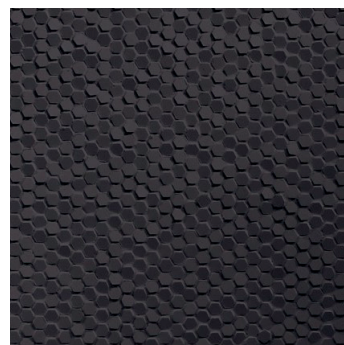
HONEYCOMBE B BIANCO



HONEYCOMBE B GRIGIO



HONEYCOMBE B FANGO



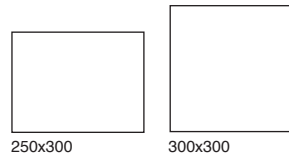
HONEYCOMBE B NERO

Size guide

452x452

300x600

Phenomenon



GROUP / Bla - PORCELAIN

	Standard	Requirement	Established values
Length and width	ISO 10545-2	$\pm 0.6\% \sim \pm 2\text{mm}$	Conforms
Thickness	ISO 10545-2	$\pm 5\% \sim \pm 0.5\text{mm}$	Conforms
Straightness	ISO 10545-2	$\pm 0.5\% \sim \pm 1.5\text{mm}$	Conforms
Flatness	ISO 10545-2	$\pm 0.5\% \sim \pm 2.0\text{mm}$	Conforms
Rectangularity	ISO 10545-2	$\pm 0.5\% \sim \pm 2.0\text{mm}$	Conforms
Water absorption	ISO 10545-3	$E_b \leq 0.5\%$	Ave 0.1%
Breaking strength	ISO 10545-4	$\geq 700\text{N}$	$\geq 700\text{N}$
Modulus of rupture	ISO 10545-4	Ave Minimum 35 N/mm ²	Ave min 35N/mm ²
Resistance to deep abrasion (unglazed tiles)	ISO 10545-6	$\geq 175\text{mm}^2$	$\geq 175\text{mm}^2$
Thermal shock resistance	ISO 10545-9	Pass according to EN ISO 10545-1	Resistant
Frost resistance	ISO 10545-12	Pass according to EN ISO 10545-1	Resistant
Resistance to household chemicals and swimming pool salts	ISO 10545-13	Min Class UB	UA
Resistance to high concentrations of alkalis and acids	ISO 10545-13	Declare Value	UHA
Resistance to low concentrations of alkalis and acids	ISO 10545-13	Declare Value	ULA
Resistance to stain	ISO 10545-14	Declare Value	Class 5
Reaction to fire	-	Class A1 A1/FL	A1 A1/FL

Recycled content	%
Phenomenon	0

The colour representations shown in this data sheet are as accurate as the limitations of the printing process will allow. Due to the manufacturing process of our floor tiles there may be a small variation in the PTV value. The slip resistance values are correct at the time of testing and represent the standard production value. Inadequate cleaning and maintenance will lead to significant reduction in the slip resistance of any tiles. The pendulum test results have been displayed in line with H&S Executive guidelines whereby 0-24 represents high slip potential, 25-35 moderate slip potential & 36+ represents a low slip potential.

For further information contact: T: 0116 276 2532 – W: www.parkside.co.uk – E: info@parkside.co.uk

Strata Technical Tiles is the partner brand of Parkside Architectural Tiles