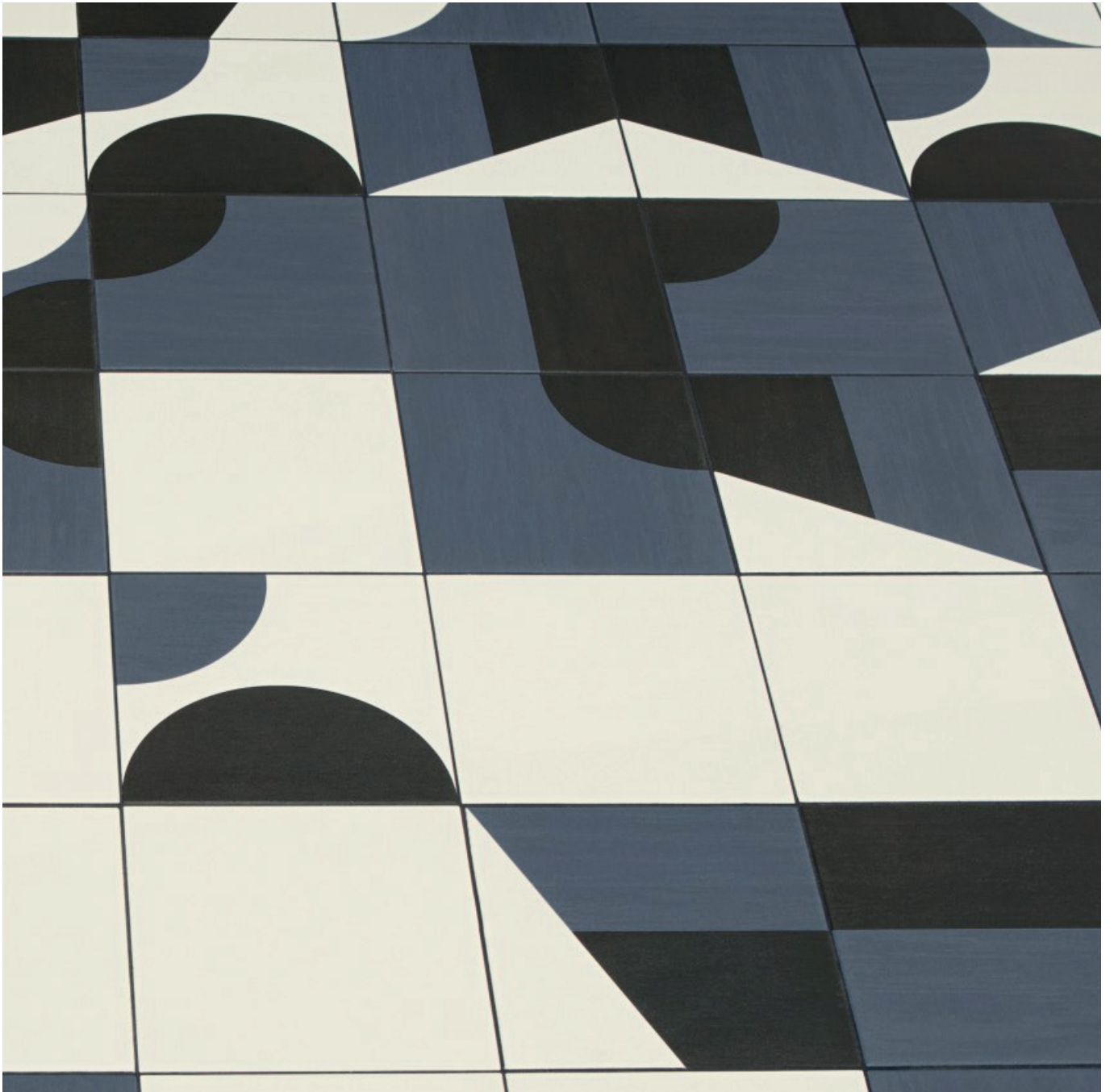


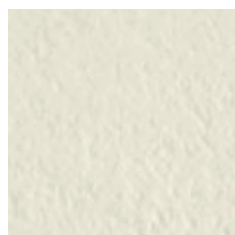
Puzzle

8 COLOURS / 1 SIZES / 1 FINISHES / 0 SPECIAL PIECES

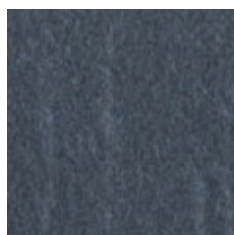
Designed by Edward Barber and Jay Osgerby for Mutina, Puzzle is a mixture of block colours and multi-coloured graphic patterns.



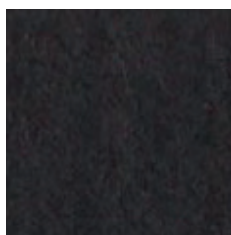
Puzzle



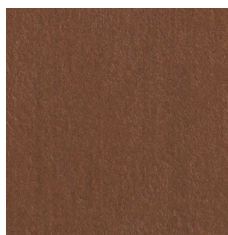
BIANCO



GRIGIO



NERO



BIANCO ESTRELA



NERO ESTRELA



GRIGIO ESTRELA



BIANCO RENDA



GRIGIO RENDA



BIANCO TRAMA



BIANCO GIRA



GRIGIO GIRA



NERO GIRA



GRIGIO FLORES

The colour representations shown in this data sheet are as accurate as the limitations of the printing process will allow. Due to the manufacturing process of our floor tiles there may be a small variation in the PTV value. The slip resistance values are correct at the time of testing and represent the standard production value. Inadequate cleaning and maintenance will lead to significant reduction in the slip resistance of any tiles. The pendulum test results have been displayed in line with H&S Executive guidelines whereby 0-24 represents high slip potential, 25-35 moderate slip potential & 36+ represents a low slip potential.

For further information contact: T: 0116 276 2532 – W: www.parkside.co.uk – E: info@parkside.co.uk

Strata Technical Tiles is the partner brand of Parkside Architectural Tiles

Puzzle



250x250

GROUP / Bla - PORCELAIN

	Standard	Requirement	Established values
Length and width	ISO 10545-2	$\pm 0.6\% \sim \pm 2\text{mm}$	Conforms
Thickness	ISO 10545-2	$\pm 5\% \sim \pm 0.5\text{mm}$	Conforms
Straightness	ISO 10545-2	$\pm 0.5\% \sim \pm 1.5\text{mm}$	Conforms
Flatness	ISO 10545-2	$\pm 0.5\% \sim \pm 2.0\text{mm}$	Conforms
Rectangularity	ISO 10545-2	$\pm 0.5\% \sim \pm 2.0\text{mm}$	Conforms
Water absorption	ISO 10545-3	$E_b \leq 0.5\%$	Ave 0.06%
Breaking strength	ISO 10545-4	$\geq 1300\text{N}$	$\geq 1300\text{N}$
Modulus of rupture	ISO 10545-4	Ave min 35 N/mm ²	Ave min 35 N/mm ²
Resistance to surface abrasion	ISO 10545-7	Declare Class	Steel, Sillate, Coal, Smoke, Cerulean, Olive, Fragola – PEI 3 Brick, Clay, Ash, Stone, Mineral – PEI 4
Thermal shock resistance	ISO 10545-9	Pass according to EN ISO 10545-1	Resistant
Frost resistance	ISO 10545-12	Pass according to EN ISO 10545-1	Resistant
Resistance to household chemicals and swimming pool salts	ISO 10545-13	Min Class GB	GA
Resistance to high concentrations of alkalis and acids	ISO 10545-13	Declare Value	GHA
Resistance to low concentrations of alkalis and acids	ISO 10545-13	Declare Value	GLA
Resistance to stain	ISO 10545-14	Declare Value	Class 5
Reaction to fire	-	Class A1 A1/FL	A1 A1/FL

Recycled content	%
Puzzle	20

The colour representations shown in this data sheet are as accurate as the limitations of the printing process will allow. Due to the manufacturing process of our floor tiles there may be a small variation in the PTV value. The slip resistance values are correct at the time of testing and represent the standard production value. Inadequate cleaning and maintenance will lead to significant reduction in the slip resistance of any tiles. The pendulum test results have been displayed in line with H&S Executive guidelines whereby 0-24 represents high slip potential, 25-35 moderate slip potential & 36+ represents a low slip potential.

For further information contact: T: 0116 276 2532 – W: www.parkside.co.uk – E: info@parkside.co.uk

Strata Technical Tiles is the partner brand of Parkside Architectural Tiles