

Rombini

5 COLOURS / 4 SIZES / 1 FINISHES / 0 SPECIAL PIECES

Designed by Ronan and Erwan Bouroullec for Mutina, the Rombini collection is available in the symbolic Bouroullecs' colours and is composed of two elements: Losange and Triangle.



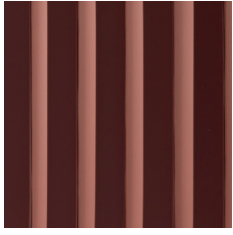
Rombini



Rombini



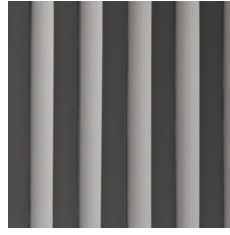
Rombini



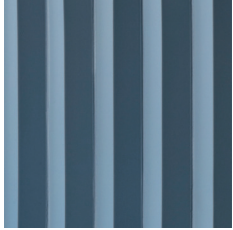
TRIANGLE RED



TRIANGLE WHITE



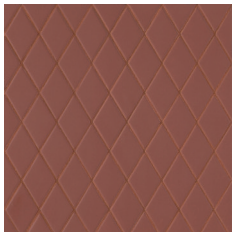
TRIANGLE GREY



TRIANGLE BLUE



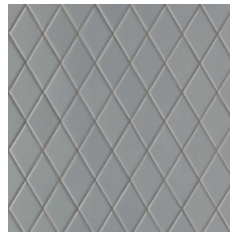
TRIANGLE GREEN



LOSANGE RED



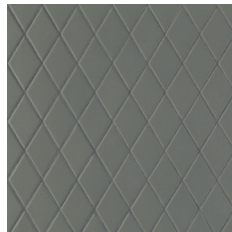
LOSANGE WHITE



LOSANGE GREY



LOSANGE BLUE



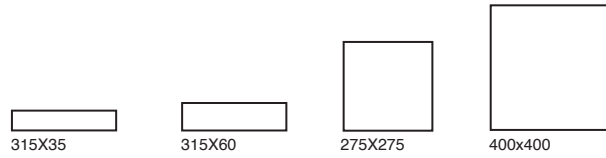
LOSANGE GREEN

The colour representations shown in this data sheet are as accurate as the limitations of the printing process will allow. Due to the manufacturing process of our floor tiles there may be a small variation in the PTV value. The slip resistance values are correct at the time of testing and represent the standard production value. Inadequate cleaning and maintenance will lead to significant reduction in the slip resistance of any tiles. The pendulum test results have been displayed in line with H&S Executive guidelines whereby 0-24 represents high slip potential, 25-35 moderate slip potential & 36+ represents a low slip potential.

For further information contact: T: 0116 276 2532 – W: www.parkside.co.uk – E: info@parkside.co.uk

Strata Technical Tiles is the partner brand of Parkside Architectural Tiles

Rombini



GROUP / Bla - PORCELAIN

LOSANGE

Range	Standard	Requirement	Established Values
Length and width	ISO 10545-2	$\pm 0.6\% \sim \pm 2\text{mm}$	Conforms
Thickness	ISO 10545-2	$\pm 5\% \sim \pm 0.5\text{mm}$	Conforms
Straightness	ISO 10545-2	$\pm 0.5\% \sim \pm 1.5\text{mm}$	Conforms
Flatness	ISO 10545-2	$\pm 0.5\% \sim \pm 2.0\text{mm}$	Conforms
Rectangularity	ISO 10545-2	$\pm 0.5\% \sim \pm 2.0\text{mm}$	Conforms
Water absorption	ISO 10545-3	$E_b \leq 0.5\%$	$\leq 0.5\%$
Breaking strength	ISO 10545-4	$\geq 1300\text{N}$	$\geq 1300\text{N}$
Modulus of rupture	ISO 10545-4	Ave Minimum 35 N/mm ²	Ave min 50 N/mm ²
Resistance to surface abrasion	ISO 10545-7	Declare Class	PEI 3
Thermal shock resistance	ISO 10545-9	Pass according to EN ISO 10545-1	Resistant
Frost resistance	ISO 10545-12	Pass according to EN ISO 10545-1	Resistant
Resistance to household chemicals and swimming pool salts	ISO 10545-13	Min Class GB	GA
Resistance to high concentrations of alkalis and acids	ISO 10545-13	Declare Value	GHA
Resistance to low concentrations of alkalis and acids	ISO 10545-13	Declare Value	GLA
Resistance to stain	ISO 10545-14	Declare Value	Class 5
Reaction to fire	-	Class A1 A1/FL	A1 A1/FL

The colour representations shown in this data sheet are as accurate as the limitations of the printing process will allow. Due to the manufacturing process of our floor tiles there may be a small variation in the PTV value. The slip resistance values are correct at the time of testing and represent the standard production value. Inadequate cleaning and maintenance will lead to significant reduction in the slip resistance of any tiles. The pendulum test results have been displayed in line with H&S Executive guidelines whereby 0-24 represents high slip potential, 25-35 moderate slip potential & 36+ represents a low slip potential.

For further information contact: T: 0116 276 2532 – W: www.parkside.co.uk – E: info@parkside.co.uk

Strata Technical Tiles is the partner brand of Parkside Architectural Tiles

Rombini

GROUP / BIII- CERAMIC

TRIANGLE

Range	Standard	Requirement	Established Values
Length and width	ISO 10545-2	±0.6% ~ ±2mm	Conforms
Thickness	ISO 10545-2	±10% ~ ±0.5mm	Conforms
Straightness	ISO 10545-2	±0.3% ~ ±1.5mm	Conforms
Flatness	ISO 10545-2	±0.5% ~ ±2.0mm	Conforms
Rectangularity	ISO 10545-2	±0.5% ~ ±2.0mm	Conforms
Water absorption	ISO 10545-3	$E_b \leq 10\%$	$\leq 0.5\%$
Breaking strength	ISO 10545-4	$\geq 600N$	$\geq 1300N$
Modulus of rupture	ISO 10545-4	Ave Minimum 12 N/mm ²	Ave min 50 N/mm ²
Thermal shock resistance	ISO 10545-1	Pass according to EN ISO 10545-1	Resistant
Resistance to household chemicals and swimming pool salts	ISO 10545-13	Min Class GB	GB
Resistance to high concentrations of alkalis and acids	ISO 10545-13	Declare Value	GHB
Resistance to low concentrations of alkalis and acids	ISO 10545-13	Declare Value	GLB
Resistance to stain	ISO 10545-14	Declare Value	Class 3
Reaction to fire	-	Class A1 A1/FL	A1 A1/FL

Recycled content	%
Rombini	24

The colour representations shown in this data sheet are as accurate as the limitations of the printing process will allow. Due to the manufacturing process of our floor tiles there may be a small variation in the PTV value. The slip resistance values are correct at the time of testing and represent the standard production value. Inadequate cleaning and maintenance will lead to significant reduction in the slip resistance of any tiles. The pendulum test results have been displayed in line with H&S Executive guidelines whereby 0-24 represents high slip potential, 25-35 moderate slip potential & 36+ represents a low slip potential.

For further information contact: T: 0116 276 2532 – W: www.parkside.co.uk – E: info@parkside.co.uk

Strata Technical Tiles is the partner brand of Parkside Architectural Tiles