

TERRAZZOCEM

Terrazzo Tiles

42 COLOURS / 3 SIZES / 2 FINISHES / 0 SPECIAL PIECES

Terrazzocem is one of the most prestigious terrazzo flooring, wall covering and accessory available on the market. With its single or double-layered technology, the granite, marble or pebble chips cementitious binder can be used without the need for reinforcement making it great for commercial and residential projects. The terrazzo tiles are manufactured traditionally and are available in an antique or honed finish. The tiles can be polished once laid on site. Available in large formats slabs if requested and bespoke colours.



TERRAZZOCEM

Terrazzo Tiles

	Standard	Marble Botticino	Granite Montorfano
Flexural Strength	EN 14617 – 2:2004	R _{tfm} = 12.6 MPa	R _{tfm} = 11.5 MPa
Resistance to Compression	EN 14617 – 15:2005	R _m = 71 MPa	R _m = 102 MPa
Resistance to Abrasion	EN 13748 – 1:2004/AC:2005	19.2 mm	15.7 mm
Water Absorption	EN 13748 – 1:2004/AC:2005	W m.a 3.88 %	W m.a 3.76 %
Reaction to Fire	EN 13748 – 1:2004/AC:2005	Class A1fl	Class A1fl
Resistance to Cold/Freeze	DIN - 52104	Resistant	Resistant

The colour representations shown in this data sheet are as accurate as the limitations of the printing process will allow. Due to the manufacturing process of our floor tiles there may be a small variation in the PTV value. The slip resistance values are correct at the time of testing and represent the standard production value. Inadequate cleaning and maintenance will lead to significant reduction in the slip resistance of any tiles. The pendulum test results have been displayed in line with H&S Executive guidelines whereby 0-24 represents high slip potential, 25-35 moderate slip potential & 36+ represents a low slip potential

For further information contact: T: 0116 276 2532 – W: www.parkside.co.uk – E: info@parkside.co.uk

Strata Technical Tiles is the partner brand of Parkside Architectural Tiles

TERRAZZOCEM

Terrazzo Tiles



STTE015



STTE016



STTE017



STTE018



STTE019



STTE020



STTE021



STTE022



STTE023



STTE024



STTE025



STTE026



STTE027



STTE028



STTE029



STTE040



STTE041



STTE042



STTE043



STTE044



STTE045



STTE046



STTE048



STTE049



STTE050

The colour representations shown in this data sheet are as accurate as the limitations of the printing process will allow. Due to the manufacturing process of our floor tiles there may be a small variation in the PTV value. The slip resistance values are correct at the time of testing and represent the standard production value. Inadequate cleaning and maintenance will lead to significant reduction in the slip resistance of any tiles. The pendulum test results have been displayed in line with H&S Executive guidelines whereby 0-24 represents high slip potential, 25-35 moderate slip potential & 36+ represents a low slip potential

For further information contact: T: 0116 276 2532 – W: www.parkside.co.uk – E: info@parkside.co.uk

Strata Technical Tiles is the partner brand of Parkside Architectural Tiles

TERRAZZOCEM

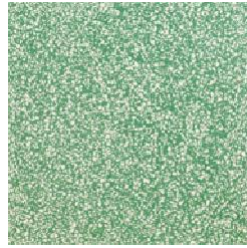
Terrazzo Tiles



STTE051



STTE052



STTE053



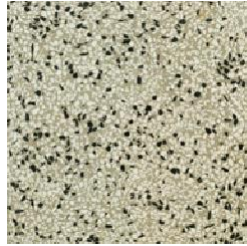
STTE054



STTE055



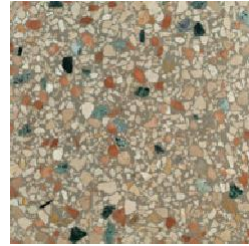
STTE056



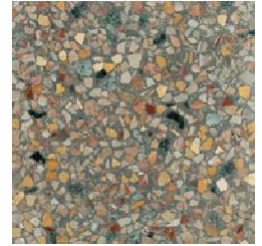
STTE057



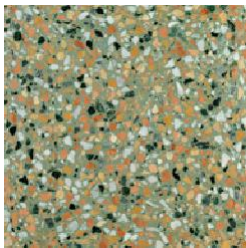
STTE010



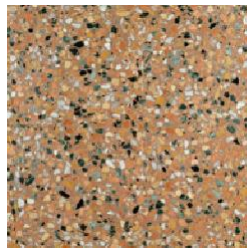
STTE011



STTE013



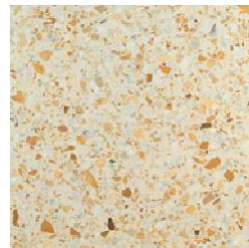
STTE014



STTE05



STTE06



STTE08



STTE084



STTE085



STTE086

The colour representations shown in this data sheet are as accurate as the limitations of the printing process will allow. Due to the manufacturing process of our floor tiles there may be a small variation in the PTV value. The slip resistance values are correct at the time of testing and represent the standard production value. Inadequate cleaning and maintenance will lead to significant reduction in the slip resistance of any tiles. The pendulum test results have been displayed in line with H&S Executive guidelines whereby 0-24 represents high slip potential, 25-35 moderate slip potential & 36+ represents a low slip potential

For further information contact: T: 0116 276 2532 – W: www.parkside.co.uk – E: info@parkside.co.uk

Strata Technical Tiles is the partner brand of Parkside Architectural Tiles