

# Azulej

**3** COLOURS / **2** SIZES / **1** FINISHES / **0** SPECIAL PIECES

Azulej, the tile collection designed by Patricia Urquiola for Mutina, reminds of the ancient handcrafted majolica, made of hydraulic cement. This tradition -revised with a contemporary look – is serially realised in 200x200mm. It is a strong review of the patchwork composition: an innovative mix and patch, deliberately random, which combines abstract patterns and subtle, neutral colours, a little used. The colours are fixed on the material in an irregular and natural way.



## Azulej



## Azulej



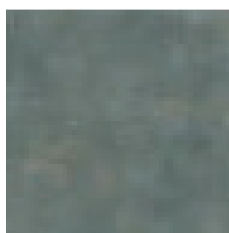
# Azulej



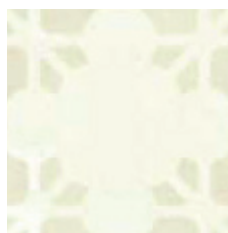
BIANCO



GRIGIO



NERO



BIANCO ESTRELA



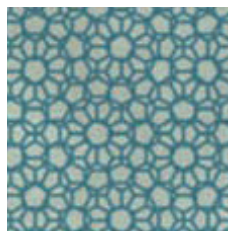
GRIGIO ESTRELA



NERO ESTRELA



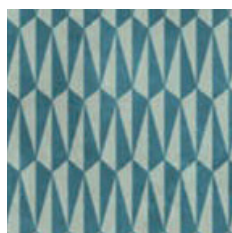
BIANCO RENDA



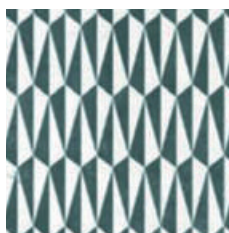
GRIGIO RENDA



BIANCO TRAMA



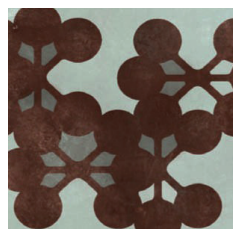
BIANCO GIRA



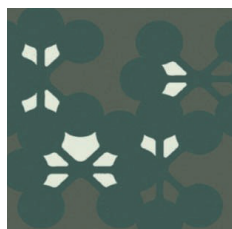
GRIGIO GIRA



NERO GIRA



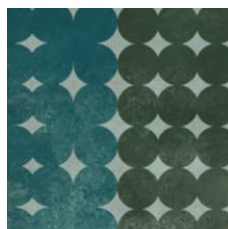
GRIGIO FLORES



NERO FLORES



BIANCO TREVO



GRIGIO TREVO

The colour representations shown in this data sheet are as accurate as the limitations of the printing process will allow. Due to the manufacturing process of our floor tiles there may be a small variation in the PTV value. The slip resistance values are correct at the time of testing and represent the standard production value. Inadequate cleaning and maintenance will lead to significant reduction in the slip resistance of any tiles. The pendulum test results have been displayed in line with H&S Executive guidelines whereby 0-24 represents high slip potential, 25-35 moderate slip potential & 36+ represents a low slip potential.

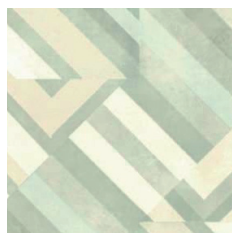
For further information contact: T: 0116 276 2532 – W: [www.parkside.co.uk](http://www.parkside.co.uk) – E: [info@parkside.co.uk](mailto:info@parkside.co.uk)

Strata Technical Tiles is the partner brand of Parkside Architectural Tiles

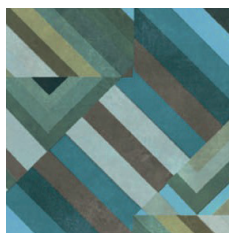
# Azulej



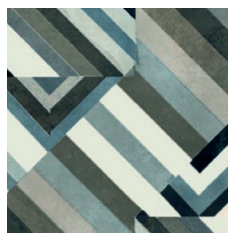
NERO TREVO



BIANCO PRATA



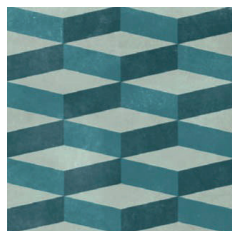
GRIGIO PRATA



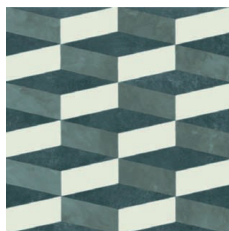
NERO PRATA



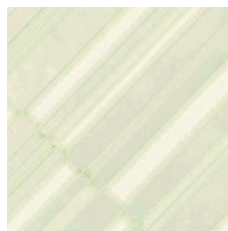
BIANCO CUBO



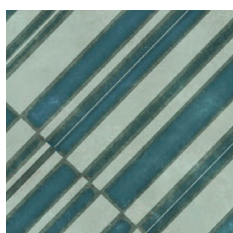
GRIGIO



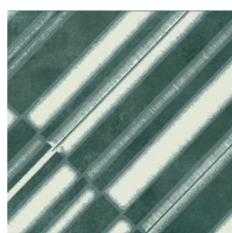
NERO



BIANCO ESTRELA



GRIGIO ESTRELA



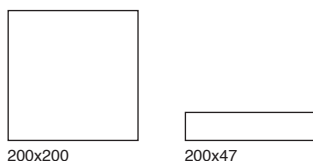
NERO ESTRELA

Porcelain	10mm thick	Wall/floor	Interior/exterior
	Matt	All tiles	All tiles
200X200	✓	Wall & floor	Interior/exterior
200X47 Battiscopa	✓	Wall & floor	Interior/exterior

The colour representations shown in this data sheet are as accurate as the limitations of the printing process will allow. Due to the manufacturing process of our floor tiles there may be a small variation in the PTV value. The slip resistance values are correct at the time of testing and represent the standard production value. Inadequate cleaning and maintenance will lead to significant reduction in the slip resistance of any tiles. The pendulum test results have been displayed in line with H&S Executive guidelines whereby 0-24 represents high slip potential, 25-35 moderate slip potential & 36+ represents a low slip potential.

For further information contact: T: 0116 276 2532 – W: [www.parkside.co.uk](http://www.parkside.co.uk) – E: [info@parkside.co.uk](mailto:info@parkside.co.uk)

Strata Technical Tiles is the partner brand of Parkside Architectural Tiles



## GROUP / Bla - PORCELAIN

	Standard	Requirement	Established values
Length and width	ISO 10545-2	$\pm 0.6\% \sim \pm 2\text{mm}$	Conforms
Thickness	ISO 10545-2	$\pm 5\% \sim \pm 0.5\text{mm}$	Conforms
Straightness	ISO 10545-2	$\pm 0.5\% \sim \pm 1.5\text{mm}$	Conforms
Flatness	ISO 10545-2	$\pm 0.5\% \sim \pm 2.0\text{mm}$	Conforms
Rectangularity	ISO 10545-2	$\pm 0.5\% \sim \pm 2.0\text{mm}$	Conforms
Water absorption	ISO 10545-3	$E_b \leq 0.5\%$	Ave 0.04%
Breaking strength	ISO 10545-4	$\geq 1300\text{N}$	2525N
Modulus of rupture	ISO 10545-4	Ave Minimum 35 N/mm <sup>2</sup>	37 N/mm <sup>2</sup>
Resistance to deep abrasion	ISO 10545-7	Declare Class	PEI 4
Thermal shock resistance	ISO 10545-9	Pass according to EN ISO 10545-1	Resistant
Frost resistance	ISO 10545-12	Pass according to EN ISO 10545-1	Resistant
Resistance to household chemicals and swimming pool salts	ISO 10545-13	Min Class GB	GA
Resistance to high concentrations of alkalis and acids	ISO 10545-13	Declare Value	NPD
Resistance to low concentrations of alkalis and acids	ISO 10545-13	Declare Value	GLA
Resistance to stain	ISO 10545-14	Declare Value	Class 4
Reaction to fire	-	Class A1 A1/FL	A1 A1/FL

Recycled content	%
Grigio and Nero	15.8
Bianco	8.6

The colour representations shown in this data sheet are as accurate as the limitations of the printing process will allow. Due to the manufacturing process of our floor tiles there may be a small variation in the PTV value. The slip resistance values are correct at the time of testing and represent the standard production value. Inadequate cleaning and maintenance will lead to significant reduction in the slip resistance of any tiles. The pendulum test results have been displayed in line with H&S Executive guidelines whereby 0-24 represents high slip potential, 25-35 moderate slip potential & 36+ represents a low slip potential.

For further information contact: T: 0116 276 2532 – W: [www.parkside.co.uk](http://www.parkside.co.uk) – E: [info@parkside.co.uk](mailto:info@parkside.co.uk)

Strata Technical Tiles is the partner brand of Parkside Architectural Tiles