

Ethical Stone

BESPOKE PRODUCT

Ethical Stone Terrazzo is a 100% British stone, British made, low carbon solid surface. They source local aggregates from the British Isles and bind them together into terrazzo tiles using next-generation low carbon cement (a by-product of the steel industry). Every effort has been made to reduce the carbon footprint of the tiles which is why they are made in Manchester.

Terrazzo was originally conceived to use up discarded marble chips and aggregates by upcycling construction waste and binding it with cement. Now, with the low carbon cement technology, terrazzo has the potential to be the ultimate circular construction product, providing architects and designers with the opportunity to upcycle materials from old buildings and repurpose them into new terrazzo surfaces.



ISLE OF SKYE WHITE, DEVON PINK, RECYCLED GLASS



PORTLAND STONE ON OFF WHITE



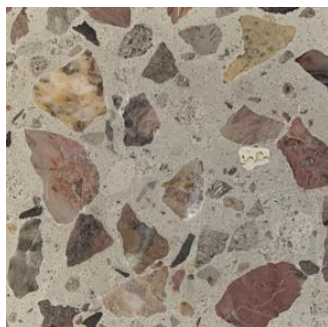
ISLE OF SKYE WHITE ON OFF WHITE



BURLINGTON GREEN



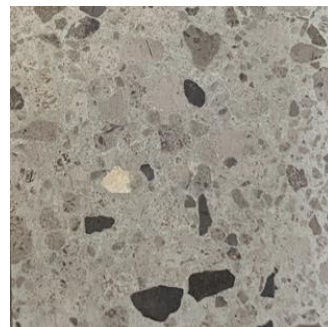
MANCHESTER BRICK ON OFF WHITE



DEVON PINK ON OFF WHITE



ISLE OF SKYE WHITE ON BLACK



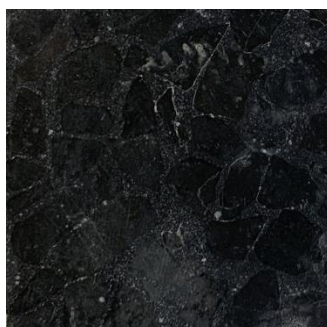
DERBYSHIRE WHEAT ON CREAM



ISLE OF SKYE WHITE, ANTRIM BASALT ON GREY



ANTRIM BASALT ON GREY



ANTRIM BASALT ON BLACK

Ethical Stone

	Standard	Requirement	Established values
Length and width	BS 13748-1 : 2004	±0.3%	Conforms
Thickness	BS 13748-1 : 2004	25mm tiles ±1.0mm 30-38mm tiles ±2.0mm	Conforms
Water absorption on tile face	BS 13748-1 : 2004	Not greater than 0.40 g/cm ²	0.25g/cm ²
Water absorption on whole tile	BS 13748-1 : 2004	Not greater than 8%	5% average
Breaking load	BS 13748-1 : 2004	Not less than 2.5kN	4.75kN
Breaking strength	BS 13748-1 : 2004	<4.00 Mpa	5.75Mpa
Resistance to deep abrasion mm ³	BS 13748-1 : 2004	No individual test result shall exceed 25mm	<25mm-modified capon test
Reaction to fire	N/A	N/A	Class A1

Slip resistance characteristics	Pendulum Dry (4S Slider 96) +36 PTV	Pendulum Wet (4S Slider 96) +36 PTV
Polished	X	X
Honed	✓	✓
Brushed	✓	✓
Sandblasted	✓	✓

Recycled content	%
Ethical Stone	5-85

The colour representations shown in this data sheet are as accurate as the limitations of the printing process will allow. Due to the manufacturing process of our floor tiles there may be a small variation in the PTV value. The slip resistance values are correct at the time of testing and represent the standard production value. Inadequate cleaning and maintenance will lead to significant reduction in the slip resistance of any tiles. The pendulum test results have been displayed in line with H&S Executive guidelines whereby 0-24 represents high slip potential, 25-35 moderate slip potential & 36+ represents a low slip potential.

For further information contact: T: 0116 276 2532 – W: www.parkside.co.uk – E: info@parkside.co.uk

Strata Technical Tiles is the partner brand of Parkside Architectural Tiles