

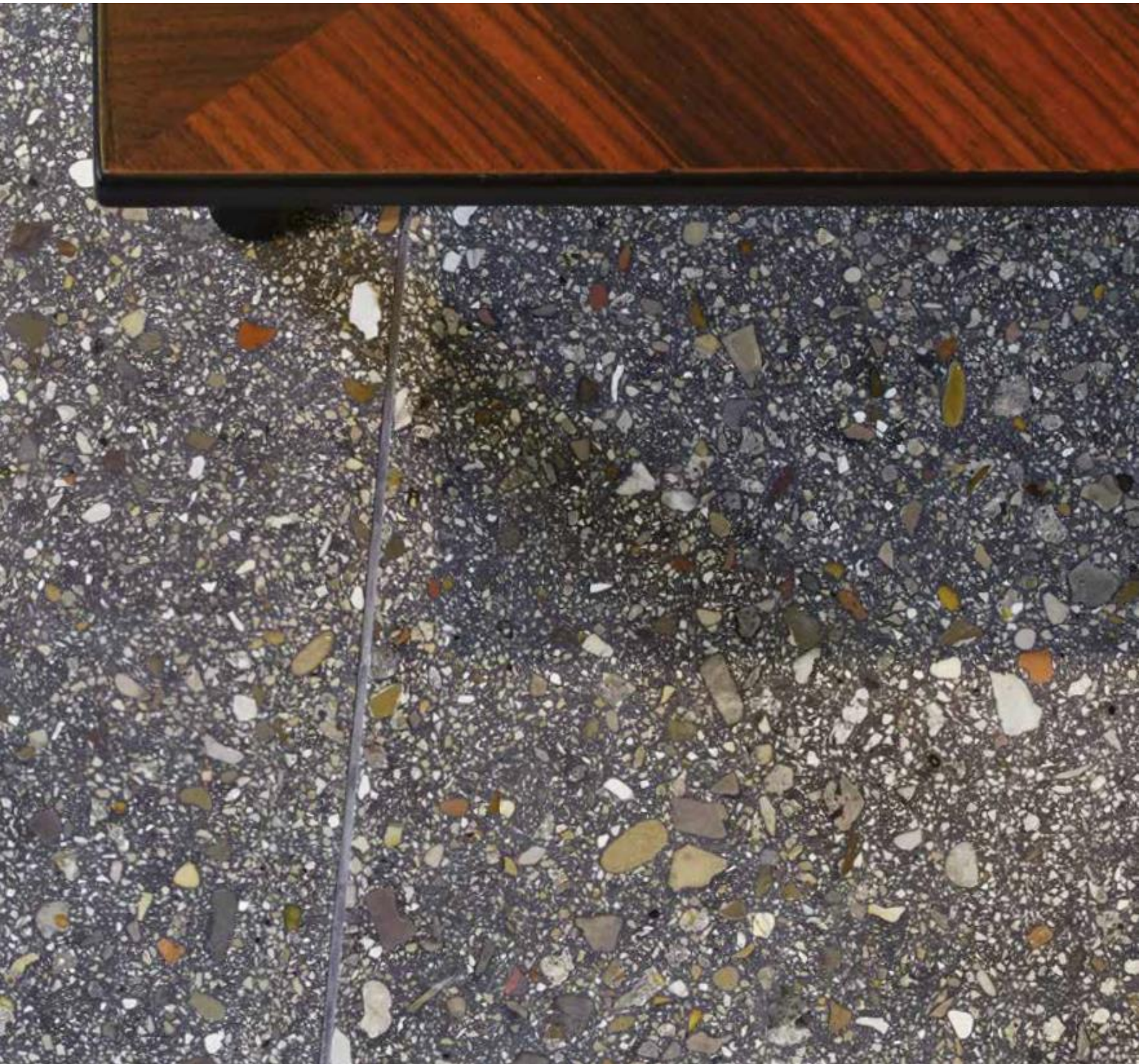
Arizona

12 COLOURS / 2 SIZES / 3 FINISHES / 0 SPECIAL PIECES

Arizona is an innovative range of terrazzo tiles which consist of 50% recycled content. Taking the traditional 1800s terrazzo methods and incorporating recycled materials allows for a product to remain historic while still thinking about a sustainable future. Available in two standard sizes: 400x400x20mm and 600x600x20mm and three finishes: Brushed, Honed & Bevelled and R10.



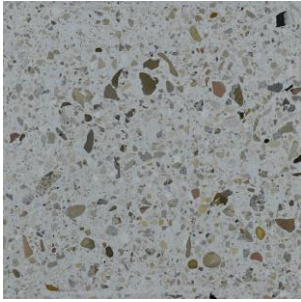
Arizona



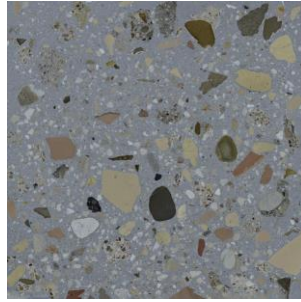
Arizona



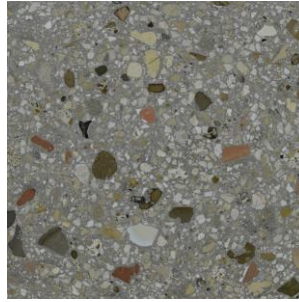
Arizona



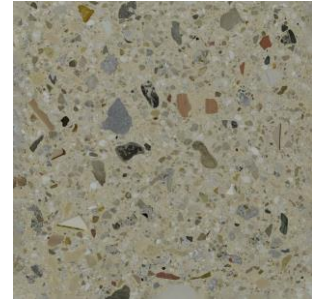
NV1 Cipolla



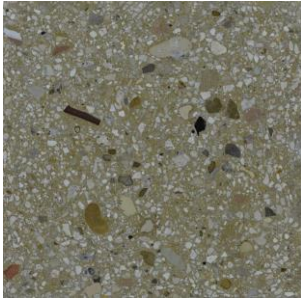
NV2 Agave



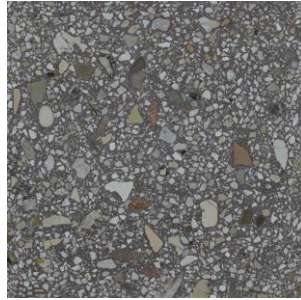
NV3 Mandorla



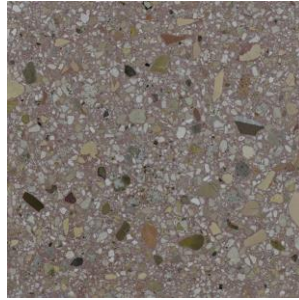
NV4 Pera Melone



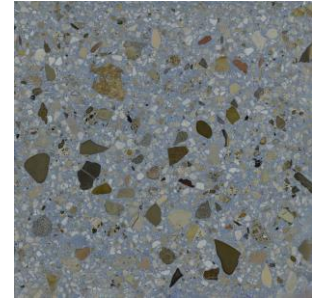
NV5 Noce



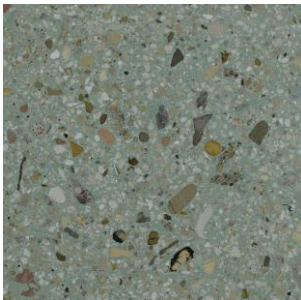
NV6 Castagna



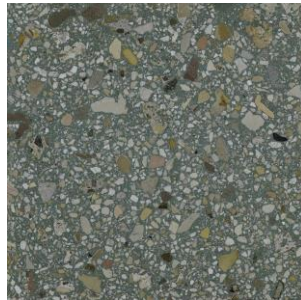
NV7 Melograno



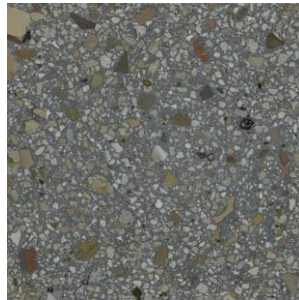
NV8 Mirtillo



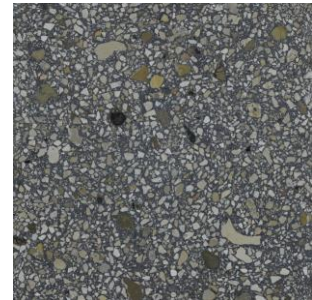
NV9 Sedano



NV10 Carciofo

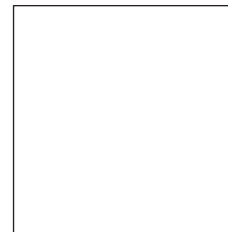


NV11 Olivo

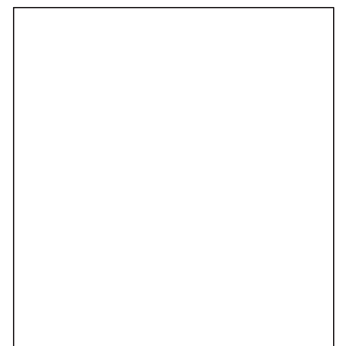


NV12 Melanzana

Terrazzo	20mm thick			Wall/floor	Interior/exterior
	Brushed	Honed & Bevelled	R10	All tiles	All tiles
400x400	✓	✓	✓	Wall & Floor	Interior & Exterior
600x600	✓	✓	✓		



400x400x20



600x600x20

The colour representations shown in this data sheet are as accurate as the limitations of the printing process will allow. Due to the manufacturing process of our floor tiles there may be a small variation in the PTV value. The slip resistance values are correct at the time of testing and represent the standard production value. Inadequate cleaning and maintenance will lead to significant reduction in the slip resistance of any tiles. The pendulum test results have been displayed in line with H&S Executive guidelines whereby 0-24 represents high slip potential, 25-35 moderate slip potential & 36+ represents a low slip potential.

For further information contact: T: 0116 276 2532 – W: www.parkside.co.uk – E: info@parkside.co.uk

Strata Technical Tiles is the partner brand of Parkside Architectural Tiles

Arizona

Composition: Marble Grit, Ground Marble, Portland 425RK, colouring oxides when required water

	Standard	Requirement	Established Values
Length and Width	EN 13748-1	±0.3%	Conforms
Thickness	ISO 10545-2	± 2mm (<40mm) ± 3mm (>40mm)	Conforms
Straightness	ISO 10545-2	±0.3%	Conforms
Flatness	ISO 10545-2	±0.3%	Conforms
Water Absorption	ISO 10545-3	$E_b < 8\%$	4.7%
Breaking Strength	ISO 10545-4	> 5.00 Mpa	12.5 Mpa
Thermal Shock Resistance	ISO 10545-9	Declare Value	NPD
Reaction to Fire		Class A1 A1/FL	A1

Slip Resistance Characteristics	Pendulum Dry (4S Slider 96) +36	Pendulum Wet (4S Slider 96) +36	Pendulum Wet (TRL Slider 55) +36
Full Range			

Recycled Content	50 %
Range Name	Arizona