


Sustainability

**Leading the environmental agenda
for material specification**



**Through our positive actions
for lasting change, we give
you the path of least
resistance to sustainable
material specifications.**

The climate challenge

The urgent need to limit global temperature rises and stop climate change means the material specification industry needs to **reduce emissions** and **meet net zero targets**.



Our vision

By contributing to a sustainable society through continuous improvement and innovation, we are **responding to the challenge of global climate change.**



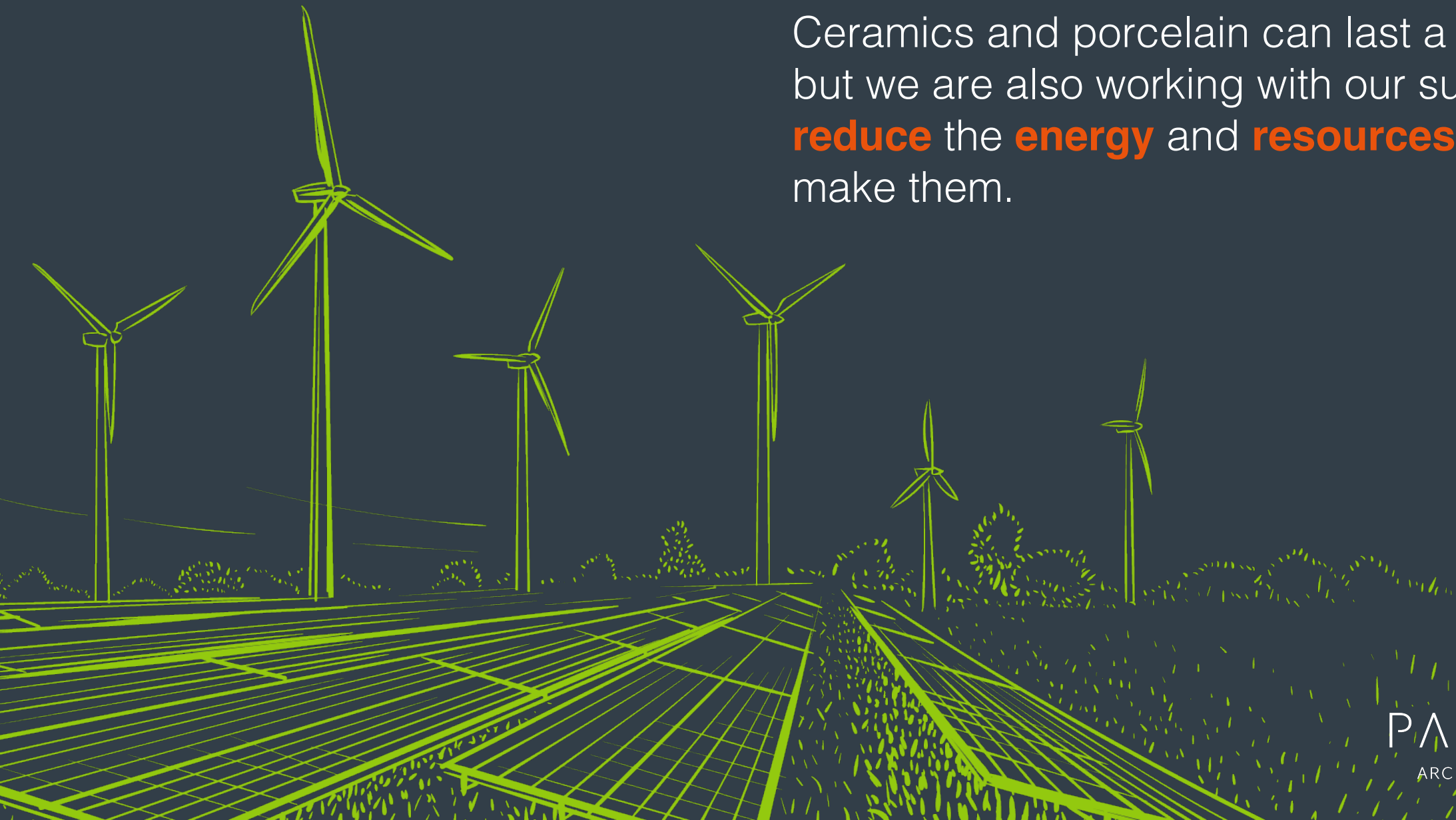
Our commitment

To source **progressive sustainable products** and work with **socially responsible production** partners, so we can contribute to a sustainable society.



Energy & resources

Ceramics and porcelain can last a lifetime, but we are also working with our suppliers to **reduce** the **energy** and **resources** used to make them.



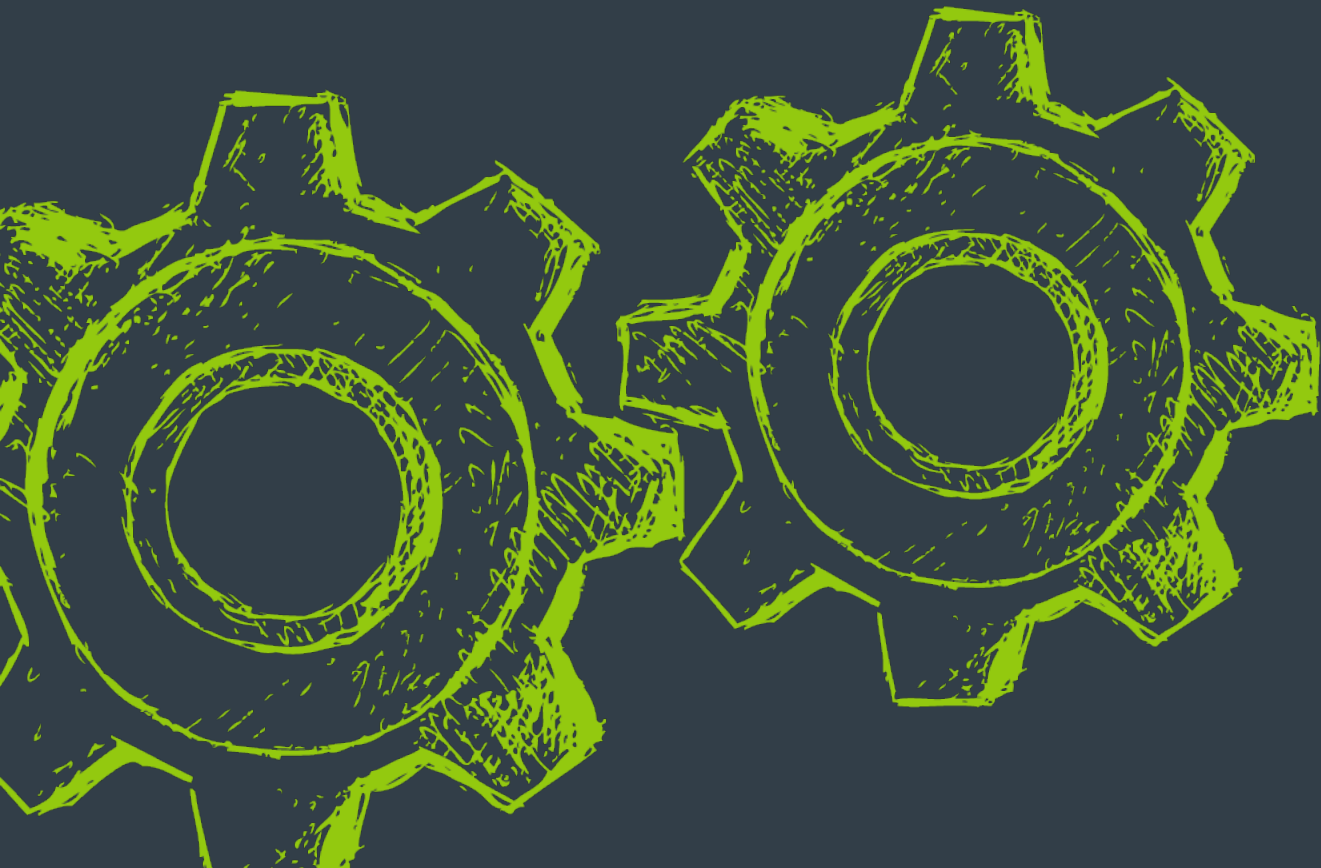
Social responsibility

We're committed to supporting the **growth** of our employees and partners, and **developing sustainable communities** in collaboration with our suppliers.

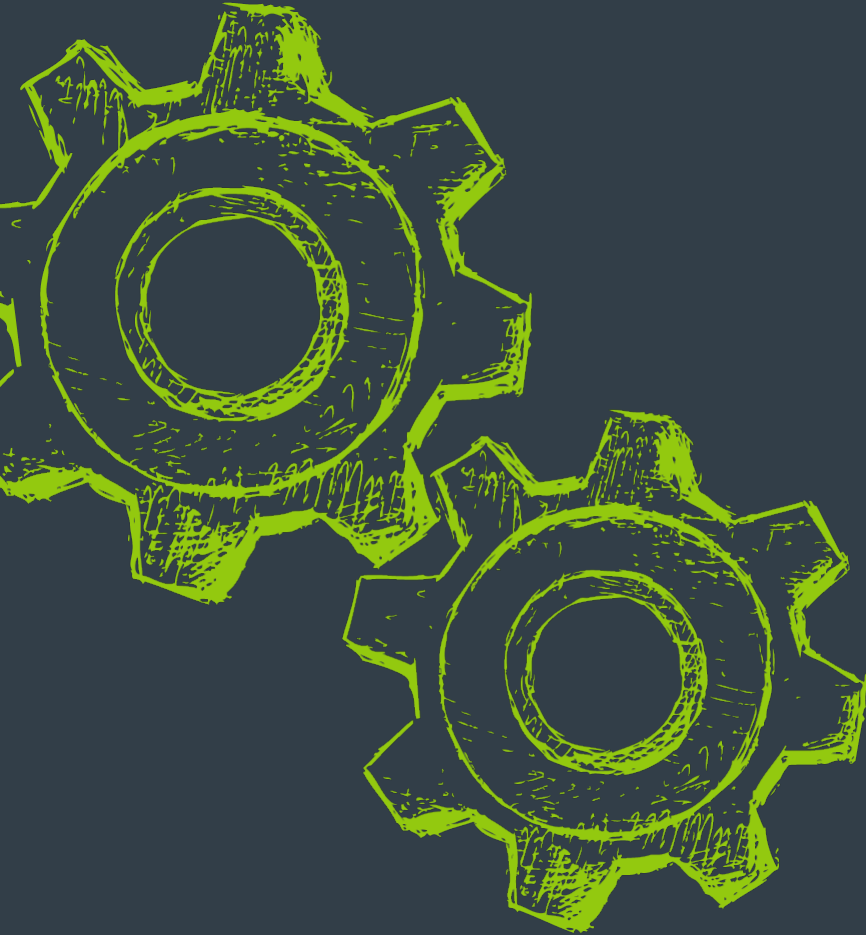


Positive actions

By taking positive actions, we can create lasting change and achieve our vision to play a part in **stopping global climate change**.



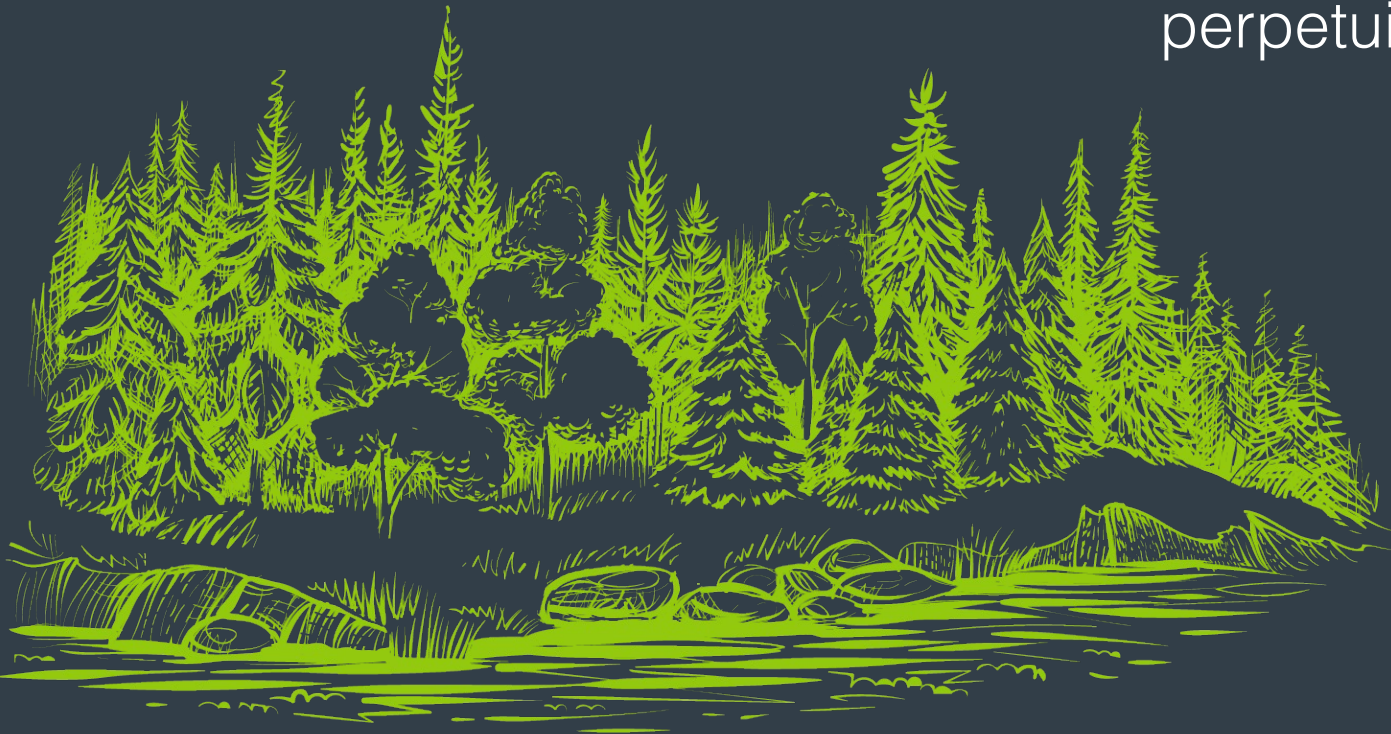
Positive actions



- **40 for 40 habitat preservation**
- **Sustainable & socially responsible production**
- **Use of renewable energy**
- **Research & education**
- **Direct choices**
- **Supply chain**

Supporting environmental charities through partnerships

40 for 40 is our landmark initiative with World Land Trust to **protect natural habitats and species**. To date, we have saved nearly **500,000m²** of habitat in perpetuity.



Partnerships with sustainable pioneers

Our Certified B Corp primary manufacturer in Italy **generates 100% of its own electricity**, recycles 99.9% of water and uses highly efficient electric kilns.

Certified



Partnerships with sustainable pioneers

We partner with a ceramic tile partner that has a **closed loop production** process, reusing production waste, process wastewater and heat. It also **restores** the **landscape** and **vegetation** of quarries.



Partnerships with sustainable pioneers

Another of our tile production partners harnesses **59.6%** of its electricity from **green sources**. It has also developed a production method which sees an average of **2,023kg** of **Nitrogen Dioxide degraded per year** (2019-21 production).



Partnerships with sustainable pioneers

Through thermal recovery of the heat used in the firing cycle, which **re-uses 95% of the exhaust gases** produced, one of our suppliers has **reduced** the amount of **natural gas** required for production **by 40%**.



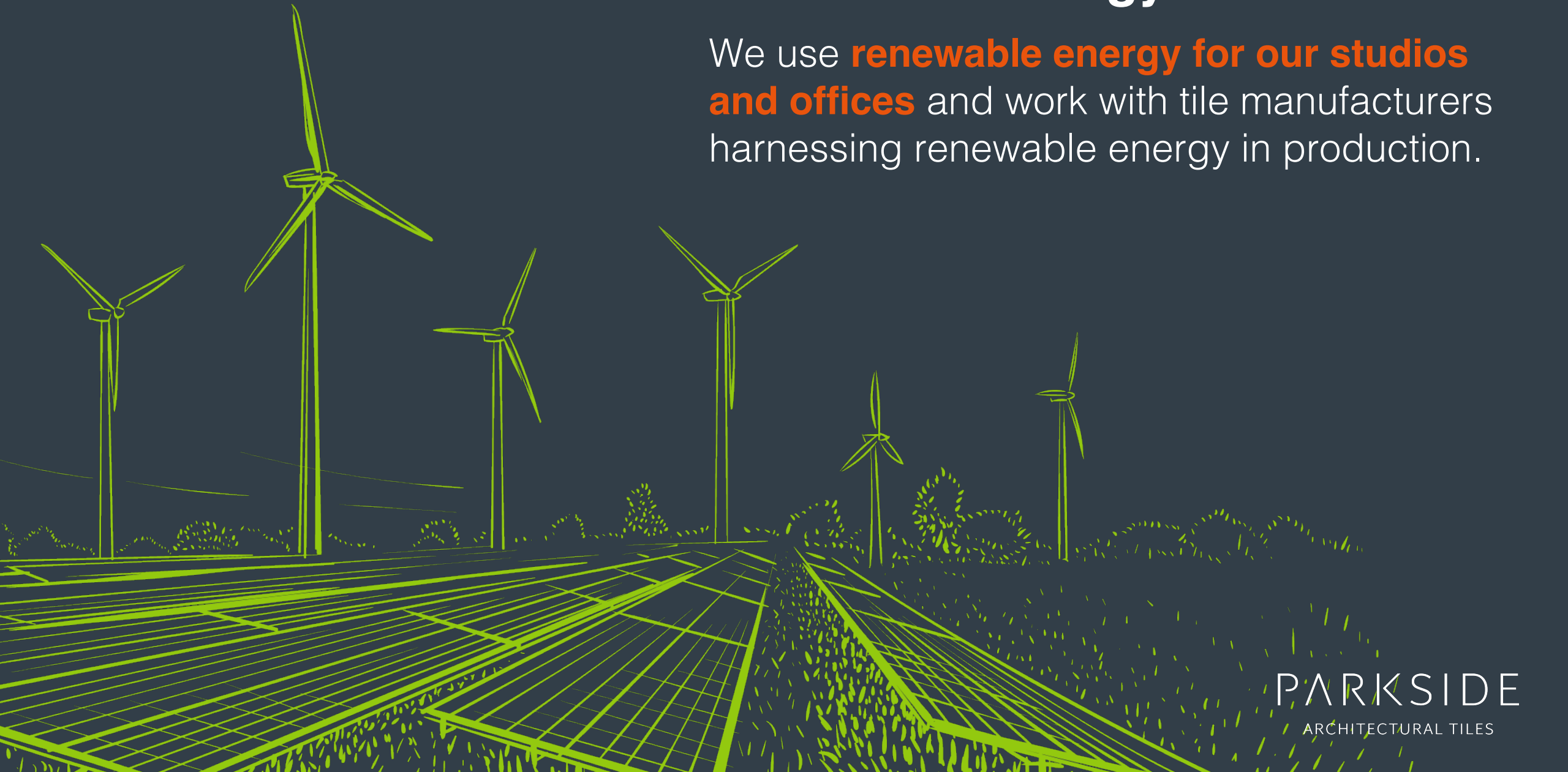
Partnerships with social pioneers

We work closely with a **not-for-profit** supplier, 100% owned by the Uta Korzilius-Kern Foundation, **for the advancement of cancer research.**



Renewable energy

We use **renewable energy for our studios and offices** and work with tile manufacturers harnessing renewable energy in production.



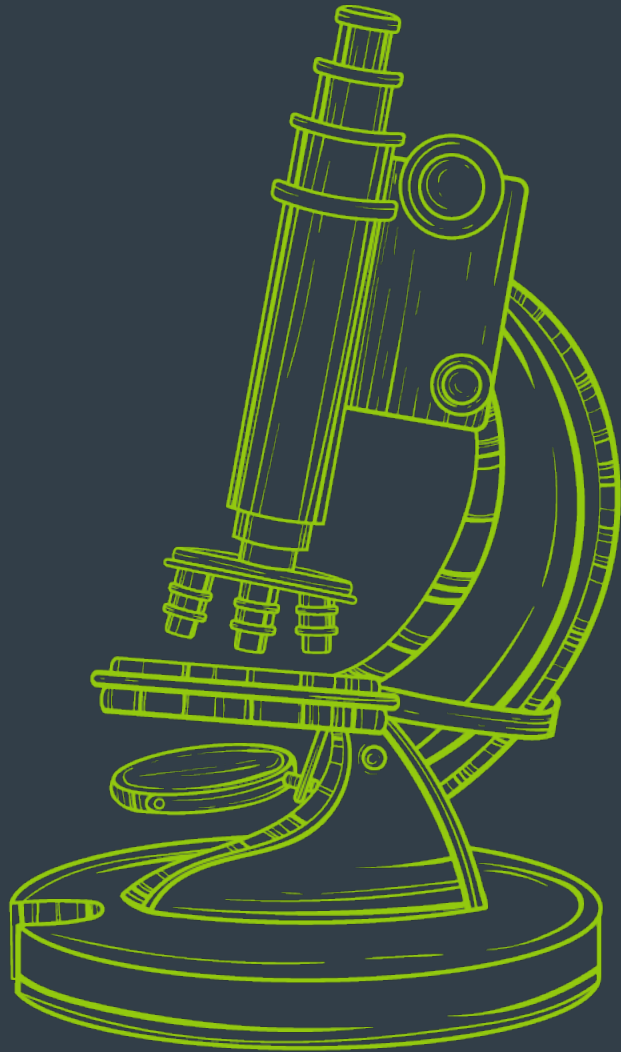
Research & education

We use **research** to **evaluate** and **reduce** the **impact** of material specification.

Education provides **leadership** in exacting **lasting positive change**.



Sustainability in the tile supply chain



We worked with the **University of East Anglia** to understand sustainability in the tile supply chain.

The project supports the efforts of our manufacturing partners and creates a framework for actions to improve group supply chain efficiency. We're currently working to put many of the report's recommendations in place.

RIBA approved CPD seminars

Our RIBA approved CPD seminar programme is increasingly focused on sustainable material choices and currently includes:

Sustainable Surface Materials

The seminar explains how the industry is adopting recycled content, recycling and efficient manufacturing to bring about positive change.



Festival of Sustainability

Bringing together like-minded presenters from across specification, the Festival of Sustainability series **explores sustainability** from a **wide perspective**.

Hearing the thoughts of industry, specifier and end user, the festivals provide **meaningful conversations** that can be the catalyst for **positive change**.

Forums

We're committed to a programme of workshops to **advance sustainable material specifications**.

Enabling us to have a **positive impact in the industry**, the forums will encourage thought on the importance of sustainability in specifications.



Direct sustainable choices

By giving you direct choices for **all projects**, we live our promise to a path of **least resistance** in sustainable material specifications.

- **Design choices**
- **Technical choices**
- **Specialist choices**
- **Value choices**
- **Fixing choices**





Direct choices in design

Made from stone powders, clays and plant fibres, Criaterra is **100% biodegradable**, offers a **90% energy saving** in production against ceramics and uses **70% upcycled quarry waste** material.



Direct choices in design

Sequel Principle is **the world's first mass produced 95% recycled content tile** with a tile body made entirely from post-consumer recycled glass and ceramic.

PARKSIDE
ARCHITECTURAL TILES



Direct choices in technical solutions

Using advanced polymer resins and pigments, as well as 92-95% natural marble chips and powders, Strata Technical Stone Marble achieves a total **93% post-industrial recycled content**.



Direct choices in specialist solutions

Designed for swimming pools, Penta Vanguard is a glass mosaic tile made with **over 50% recycled content**, qualifying for our 40 for 40 programme.



Direct choices in value tiles

Bruar is a value-engineered glazed ceramic wall tile that has **70% recycled content**.

PARKSIDE
ARCHITECTURAL TILES



Direct choices in value tiles

With contemporary colour choices and matt and gloss finishes, Larniam is a versatile ceramic wall tile collection. The tiles feature **15% recycled content.**



Direct choices in fixing

Regenr8

Specially formulated with Ecosand, a composition of recycled waste materials, GreenSpec PASS certified Regenr8 is a tile adhesive range made with a minimum of **43% recycled content**.

Versaflex

Versaflex is a dry installation system for porcelain floor tiles that **eliminates the need for tile adhesive and grout sealer**.

Progressive Supply Chain

To achieve our environmental ambitions, we've made **progressive improvements** through our supply chain to **reduce carbon emissions**.



Carbon Balanced Tile Specifications

We provide an option to make your tile specification and delivery **CO₂ balanced** through a range of habitat protection projects by World Land Trust.



Delivery & logistics

As part of our drive to carbon neutral operation, we're **reducing the emissions** of our transport fleet.

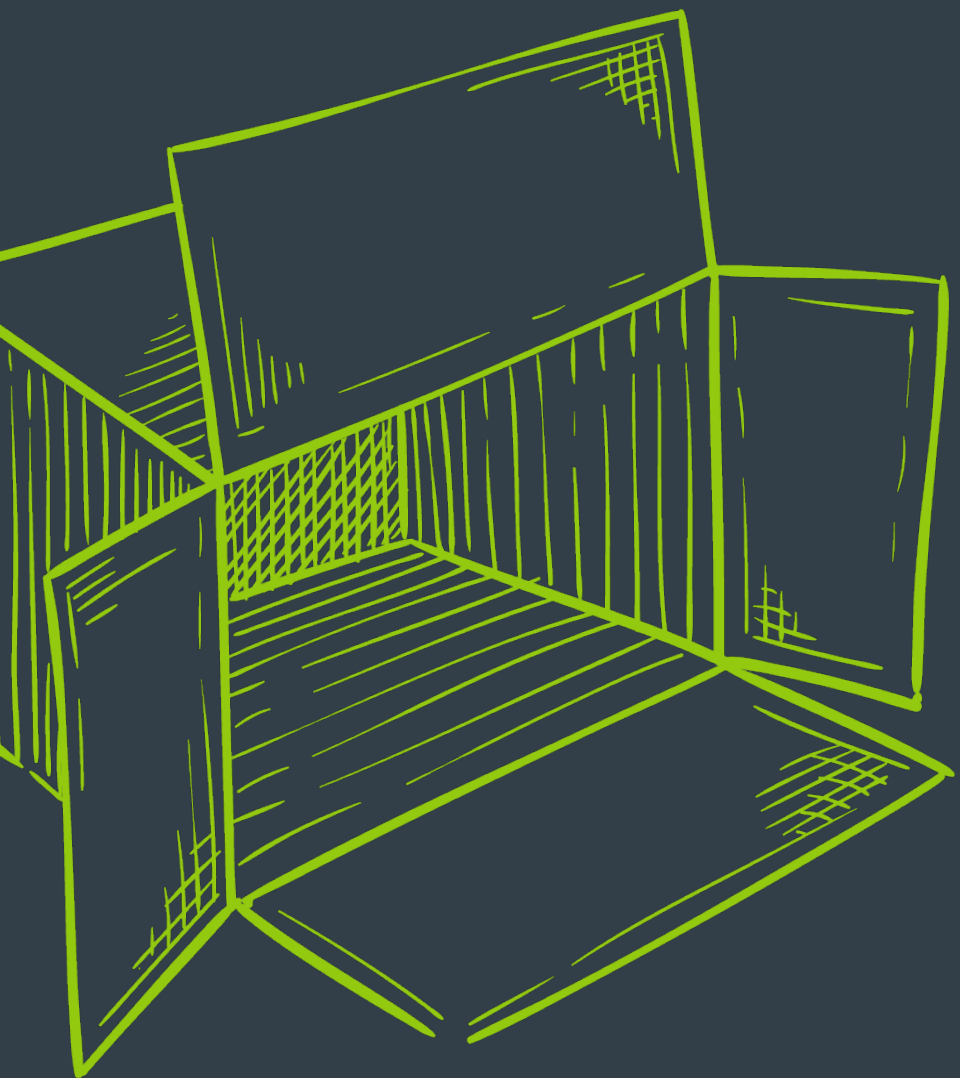


- Latest diesel Euro 6 standard engines minimise emissions
- LNG (liquid natural gas) lorry is now delivering tiles to projects.
- Switch to electric and gas delivery vehicles as infrastructure improves
- Electric vehicle-mounted forklifts

Studio sample returns

Our Studio Samples Return service makes it easy to **return your unwanted or finished tile samples**. Drop them off at any of our studios and they'll be collected and entered into our **recycling processes**.





Cutting down on packaging waste in deliveries

Many tiles leaving our warehouse are shipped to projects in cardboard boxes that are **recyclable** through conventional waste streams and, typically, high in recycled content.

As members of Plastic Pact, we are working alongside NGO WRAP to ensure our plastic packaging is **100% recyclable**, and that it includes at least **30% recycled content**.

By contributing to a sustainable society through continuous improvement and innovation, we'll play a part in **stopping global climate change.**

parkside.co.uk/sustainability