

# PRONTO™

LUXURY VINYL TILES



46 designs  
**MULTIPLE** sizes  
**ACCESSORIES** available



# RANGE OVERVIEW

## CLICK - WOOD EFFECT PLANKS

Bringing beauty and elegance, as well as functionality and durability, our Pronto Click ranges are hardwearing with an embossed surface creating a wood or stone effect with an authentic look and feel. Featuring DIY-friendly click systems, our wide range of Pronto luxury vinyl tiles are a great alternative to tiled or wooden flooring.



ARDEN  
GREY



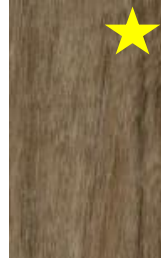
BRADA  
CHESTNUT



BRADA  
STORM



BRANT



ENNERDALE



EPPING



GALLOWAY



GLENMORE



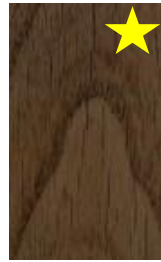
HALDON



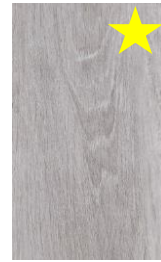
INGLETON



IVAR



KRAHN



LIGHTNING  
OAK



RMINGTON



ROSENHOLM



LASSON



CARSON



KOA



MERANTI

★ PTV+36



SELWOOD



TWILIGHT  
OAK



VERN



WYKEHAM



# RANGE OVERVIEW

## CLICK - EXTRA LARGE PLANKS



AFARA  
GOLDEN OAK



DANTREE  
MAPLE



DENYA  
WALNUT



FRISTON MID  
OAK

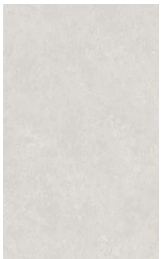


HAFREN  
NATURAL OAK



YARRAN  
GREY

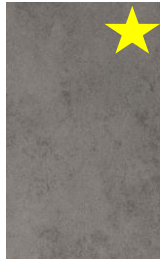
## CLICK - STONE EFFECT TILES



ASHFORD  
IVORY



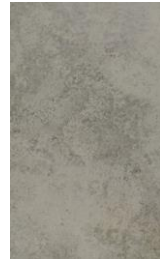
BRIGHSTONE  
GREY



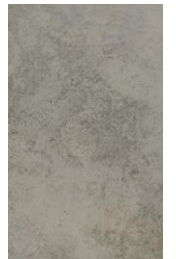
GIMROCK



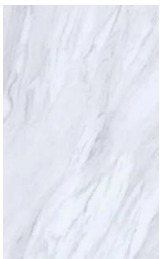
HIMALAYAN  
STONE



KETTON  
CONCRETE



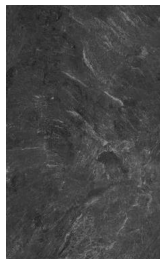
MARTA



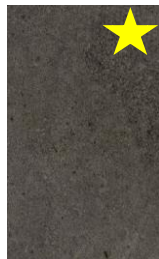
NAXOS  
CALACATTA



STANHOPE



VERMONT  
SLATE



WINSPLIT

★ PTV+36



# RANGE OVERVIEW

## MULTI-CLICK

Our multi-click range of luxury vinyl tiles have a unique soft top layer that is not only comfortable to walk on but also absorbs noise making it up to 50% more silent than other luxury vinyl floors.

With a unique 360° interlocking system, DreamClick, our multi-click range allows you to experiment with different laying patterns unlike most other LVT ranges.

AN UNDERLAY IS REQUIRED WITH THIS RANGE OF LVT, AND WE RECOMMEND THAT DREAM-TEX+ UNDERLAY IS USED.



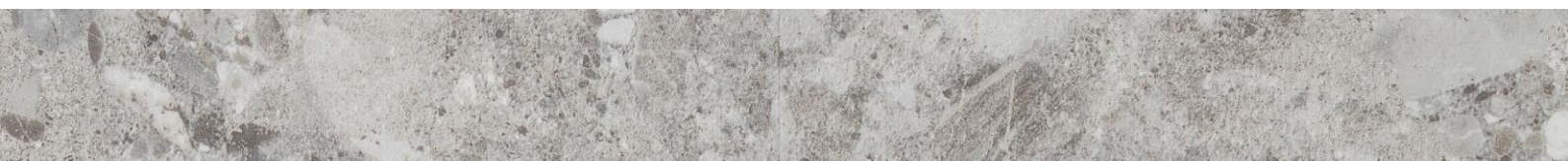
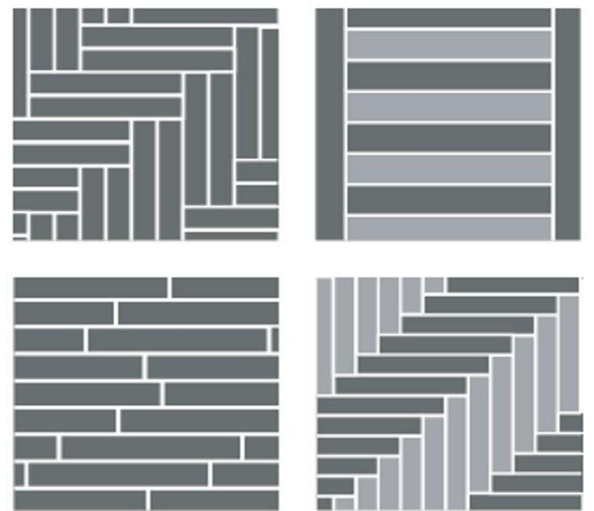
TERRAZZO LIGHT GREY



URBAN STONE  
DARK GREY



URBAN STONE BEIGE



## RANGE OVERVIEW

### HERRINGBONE

Our herringbone luxury vinyl tile range features an innovative 2G Unilin locking system which is one of the few truly herringbone systems which has an integrated underlay.



PARKHURST



CARRICK



MARSTON



WHINFELL



Due to the number of cuts required to achieve this design, an extra 10% should be ordered to ensure you have sufficient boards to complete the area.



## RANGE OVERVIEW

### FINISHING TOUCHES - SCOTIA

Our range of 2m long vinyl tile scotia provide a professional finish to your vinyl flooring and are an easy to install alternative to skirting.

In a range of contemporary colours, our vinyl tile scotias provide a seamless blend between floor and wall whilst remaining stylish.



BROWN OAK



OAK



MEDIUM GREY



GREY OAK



DARK OAK



WHITE

Our 2m long vinyl tile scotia are easy to install and can be easily cut to size using a fine-toothed saw.

Any end of a scotia that joins another piece should be cut at a 45° angle, so the two pieces fit together seamlessly; the use of a mitre box is recommended when cutting.

The scotia should be fitted to the skirting/wall using a high strength adhesive. **DO NOT** attach the scotia to the floor, this will ensure the vinyl floor is left free to expand and move with any changes in environment temperature.

Use a damp cloth to remove any excess adhesive from the scotia before it dries.



# RANGE OVERVIEW

## FINISHING TOUCHES - DOOR BARS

Our range of 0.9m long multi-floor door bars are designed for use on all types of flooring even if they are of unequal heights ranging from 0-14mm.

In a range of wood and metal effects, our multi-floor door bars provide a great solution for connecting rooms with LVT to other types of flooring.



SILVER



TITANIUM



CHAMPAGNE



OAK



RUSTIC OAK



WALNUT



Our range of multi-floor door bars are 0.9m long and 40mm wide making them suitable for use between floors with a maximum 14mm height difference.

We have even more profile options available in the Dural Product range to ensure there is something for all scenarios.



# RANGE OVERVIEW

NAME	SIZE (cm)	OVERALL THICKNESS (mm)	WEAR LAYER (mm)	SUITABILITY	SLIP RESISTANCE	PACK SIZE (m2)	FITTING SYSTEM	UNDERLAY REQUIRED
Afara Golden Oak	18.1x152.4	7	0.5	Domestic & Commercial	High	1.66	5Gi	No
Arden Grey	19.1x124.2	6.5	0.3	Domestic Only	High	2.20	2G	No
Ashford Ivory	34.8x60.9	5	0.3	Domestic Only	High	1.86	5Gi	No
Brada Chestnut	18x122	5.5	0.3	Domestic Only	High	1.75	5Gi	No
Brada Storm	18x122	5.5	0.3	Domestic Only	High	1.75	5Gi	No
Brant	22x122	5.5	0.55	Domestic & Commercial	High	2.14	5Gi	No
Brighstone Grey	31.7x62.2	7.7	0.3	Domestic Only	High	2.23	2G	No
Carrick Oak	12.5x62.5	5	0.55	Domestic & Commercial	Low	2.34	Herringbone	No
Carson Grey	18.1x121.9	5	0.5	Domestic & Commercial	High	2.20	5Gi	No
Daintree Maple	18.1x152.4	7	0.5	Domestic & Commercial	High	1.66	5Gi	No
Denya Walnut	18.1x152.4	7	0.5	Domestic & Commercial	High	1.66	5Gi	No
Ennerdale Brown	23.8x123	5.5	0.5	Domestic & Commercial	High	2.75	2G	No
Epping Brown	23.8x123	5.5	0.5	Domestic & Commercial	High	2.75	2G	No
Friston Mid Oak	18.1x152.4	7	0.5	Domestic & Commercial	High	1.66	5Gi	No
Galloway Grey	19.1x124.2	6.5	0.3	Domestic Only	High	2.20	2G	No
Gimrock Grey	31.7x62.2	7.7	0.3	Domestic Only	High	2.23	2G	No
Glenmore Grey	19.1x124.2	6.5	0.3	Domestic Only	High	2.20	2G	No
Hafren Natural Oak	18.1x152.4	7	0.5	Domestic & Commercial	High	1.66	5Gi	No
Haldon Brown	19.1x124.2	6.5	0.3	Domestic Only	High	2.20	2G	No
Himalayan Stone	30.3x60.7	5	0.3	Domestic Only	Moderate	2.21	I4F	No
Ingleton Brown	19.1x124.2	6.5	0.3	Domestic Only	High	2.20	2G	No
Ivar	17.6x122	5.5	0.3	Domestic Only	High	1.71	5Gi	No
Ketton Concrete	34.8x60.9	5	0.3	Domestic Only	High	1.86	5Gi	No
Koa Oak	18.1x121.9	5	0.5	Domestic & Commercial	High	2.20	5Gi	No
Krahn Brown	19.1x124.2	6.5	0.3	Domestic Only	High	2.20	2G	No
Lasson Greige	18.1x121.9	5	0.5	Domestic & Commercial	High	2.20	5Gi	No
Lightning Oak	60.7x124.4	5	0.3	Domestic Only	Moderate	2.21	I4F	No
Marston Grey	12.5x62.5	5	0.55	Domestic & Commercial	Low	2.34	Herringbone	No
Marta	30x45.7	5.5	0.3	Domestic Only	High	1.37	5Gi	No
Meranti Walnut	18.1x121.9	5	0.5	Domestic & Commercial	High	2.20	5Gi	No
Naxos Calacatta	34.8x60.9	5	0.3	Domestic Only	High	1.86	5Gi	No
Parkhurst Grey	12.5x62.5	5	0.55	Domestic & Commercial	Low	2.34	Herringbone	No
Rivington Brown	19.1x124.2	6.5	0.3	Domestic Only	High	2.20	2G	No
Rosenholm Grey	19.1x124.2	6.5	0.3	Domestic Only	High	2.20	2G	No
Selwood Brown	17.9x123	6	0.3	Domestic Only	High	2.20	2G	No
Stanhope Grey	31.7x62.2	7.7	0.3	Domestic Only	High	2.23	2G	No
Terrazzo Light Grey	61.2x61.2	5	0.55	Domestic & Commercial	Low	2.24	Multi-Click	Yes
Twilight Oak	60.7x124.4	5	0.3	Domestic Only	Moderate	2.21	I4F	No
Urban Stone Beige	61.2x61.2	5	0.55	Domestic & Commercial	Low	2.24	Multi-Click	Yes
Urban Stone Grey	61.2x61.2	5	0.55	Domestic & Commercial	Low	2.24	Multi-Click	Yes
Vermont Slate	34.8x60.9	5	0.3	Domestic Only	High	1.86	5Gi	No
Vern	22x122	5.5	0.55	Domestic & Commercial	High	2.14	5Gi	No
Whinfell Light Oak	12.5x62.5	5	0.55	Domestic & Commercial	Low	2.34	Herringbone	No
Wispit Grey	31.7x62.2	7.7	0.3	Domestic Only	High	2.23	2G	No
Wykeham Grey	19.1x124.2	6.5	0.3	Domestic Only	High	2.20	2G	No
Yarran Grey	18.1x152.4	7	0.5	Domestic & Commercial	High	1.66	5Gi	No



# PRONTO

Luxury Vinyl Flooring Rigid Tile 61cm x 30.5cm;  
Gimrock, Stanhope, Brighstone, Winspit

	Standard	Established Values
CE/DOP	EN 14041/2006	Pass
Usage Classification	EN 485	23-31
Manufacturing Standard	EN 649	EN649
Total Thickness	EN 428	6mm
Wear Layer Thickness	EN 429	0.3mm
Weight	EN 430	8.11kg/m <sup>2</sup>
Abrasion Resistance	EN 660-1/2	Group T
Residual Indentation	EN 433	Pass
Dimensional Stability	EN 434	Pass
Chemical Resistance	EN 423	Pass
Colour Fastness to Light	EN 20105-B02	≥ 6 Class
Flammability	EN 13501-1 Class Bfl-S1	Pass
Castor Chair Resistance	EN 425	20034
Impact Sound Insulation	EN ISO140-8	"IIC=73 STC=72"
Thermal Resistance	EN 12667	0.033(m <sup>2</sup> .k)/W
Electrostatic Performance	EN 1815	0.2 Kv
Emissions	Floor Score	Pass
Phthalate Free	EN 14372:2004	Pass

The colour representations shown in this data sheet are as accurate as the limitations of the printing process will allow. Due to the manufacturing process of our floor tiles there may be a small variation in the PTV value. The slip resistance values are correct at the time of testing and represent the standard production value. Inadequate cleaning and maintenance will lead to significant reduction in the slip resistance of any tiles. The pendulum test results have been displayed in line with H&S Executive guidelines whereby 0-24 represents high slip potential, 25-35 moderate slip potential & 36+ represents a low slip potential.

For further information contact: T: 0116 276 2532 – W: [www.parkside.co.uk](http://www.parkside.co.uk) – E: [info@parkside.co.uk](mailto:info@parkside.co.uk)

Strata Technical Tiles is the partner brand of Parkside Architectural Tiles

# PRONTO

Luxury Vinyl Flooring Rigid Plank 123cm x 17.9cm

Galloway, Krahn, Arden, Rivington, Ingleton, Wykeham, Haldon, Rosenholm, Glenmore, Selwood

	Standard	Established Values
CE/DOP	EN 14041/2006	Pass
Usage Classification	EN 485	23-31
Manufacturing Standard	EN 649	EN649
Total Thickness	EN 428	6mm
Wear Layer Thickness	EN 429	0.3mm
Weight	EN 430	9.83kg/m <sup>2</sup>
Abrasion Resistance	EN 660-1/2	Group T
Residual Indentation	EN 433	Pass
Dimensional Stability	EN 434	Pass
Chemical Resistance	EN 423	Pass
Colour Fastness to Light	EN 20105-B02	≥ 6 Class
Flammability	EN 13501-1 Class Bfl-S1	Pass
Castor Chair Resistance	EN 425	25322
Impact Sound Insulation	EN ISO140-8	"IIC=73 STC=72"
Thermal Resistance	EN 12667	0.033(m <sup>2</sup> .k)/W
Electrostatic Performance	EN 1815	0.2 Kv
Emissions	Floor Score	Pass
Phthalate Free	EN 14372:2004	Pass

The colour representations shown in this data sheet are as accurate as the limitations of the printing process will allow. Due to the manufacturing process of our floor tiles there may be a small variation in the PTV value. The slip resistance values are correct at the time of testing and represent the standard production value. Inadequate cleaning and maintenance will lead to significant reduction in the slip resistance of any tiles. The pendulum test results have been displayed in line with H&S Executive guidelines whereby 0-24 represents high slip potential, 25-35 moderate slip potential & 36+ represents a low slip potential.

For further information contact: T: 0116 276 2532 – W: [www.parkside.co.uk](http://www.parkside.co.uk) – E: [info@parkside.co.uk](mailto:info@parkside.co.uk)

Strata Technical Tiles is the partner brand of Parkside Architectural Tiles

# PRONTO

Luxury Vinyl Flooring Rigid Plank 123cm x 17.9cm

Parkhurst, Carrick, Marston, Whinfell

	Standard	Established Values
CE/DOP	EN 14041/2006	Pass
Usage Classification	EN 485	31-34
Manufacturing Standard	EN 649	EN649
Total Thickness	EN 428	5mm
Wear Layer Thickness	EN 429	0.55mm
Weight	EN 430	8.33kg/m <sup>2</sup>
Abrasion Resistance	EN 660-1/2	Group T
Residual Indentation	EN 433	Pass
Dimensional Stability	EN 434	Pass
Chemical Resistance	EN 423	Pass
Colour Fastness to Light	EN 20105-B02	≥ 6 Class
Flammability	EN 13501-1 Class Bfl-S1	Pass
Castor Chair Resistance	EN 425	22115
Impact Sound Insulation	EN ISO140-8	"IIC=55 STC=49"
Thermal Resistance	EN 12667	0.033(m <sup>2</sup> .k)/W
Electrostatic Performance	EN 1815	0.2 Kv
Emissions	Floor Score	Pass
Phthalate Free	EN 14372:2004	Pass

The colour representations shown in this data sheet are as accurate as the limitations of the printing process will allow. Due to the manufacturing process of our floor tiles there may be a small variation in the PTV value. The slip resistance values are correct at the time of testing and represent the standard production value. Inadequate cleaning and maintenance will lead to significant reduction in the slip resistance of any tiles. The pendulum test results have been displayed in line with H&S Executive guidelines whereby 0-24 represents high slip potential, 25-35 moderate slip potential & 36+ represents a low slip potential.

For further information contact: T: 0116 276 2532 – W: [www.parkside.co.uk](http://www.parkside.co.uk) – E: [info@parkside.co.uk](mailto:info@parkside.co.uk)

Strata Technical Tiles is the partner brand of Parkside Architectural Tiles

# PRONTO

Luxury Vinyl Flooring Rigid Plank 121.8cm x 22.6cm

Ennerdale, Epping

	Standard	Established Values
CE/DOP	EN 14041/2006	Pass
Usage Classification	EN 485	31-34
Manufacturing Standard	EN 649	EN 649
Total Thickness	EN 428	5mm
Wear Layer Thickness	EN 429	0.5mm
Weight	EN 430	7.68kg/m <sup>2</sup>
Abrasion Resistance	EN 660-1/2	Group T
Residual Indentation	EN 433	Pass
Dimensional Stability	EN 434	Pass
Chemical Resistance	EN 423	Pass
Colour Fastness to Light	EN 20105-B02	≥ 6 Class
Flammability	EN 13501-1 Class Bfl-S1	Pass
Castor Chair Resistance	EN 425	22130
Impact Sound Insulation	EN ISO140-8	"IIC=55 STC=49"
Thermal Resistance	EN 12667	0.033(m <sup>2</sup> .k)/W
Electrostatic Performance	EN 1815	0.2 Kv
Emissions	Floor Score	Pass
Phthalate Free	EN 14372:2004	Pass

The colour representations shown in this data sheet are as accurate as the limitations of the printing process will allow. Due to the manufacturing process of our floor tiles there may be a small variation in the PTV value. The slip resistance values are correct at the time of testing and represent the standard production value. Inadequate cleaning and maintenance will lead to significant reduction in the slip resistance of any tiles. The pendulum test results have been displayed in line with H&S Executive guidelines whereby 0-24 represents high slip potential, 25-35 moderate slip potential & 36+ represents a low slip potential.

For further information contact: T: 0116 276 2532 – W: [www.parkside.co.uk](http://www.parkside.co.uk) – E: [info@parkside.co.uk](mailto:info@parkside.co.uk)

Strata Technical Tiles is the partner brand of Parkside Architectural Tiles

# PRONTO

Luxury Vinyl Flooring Multi-Click 61.2cm x 61.2cm

Urban Stone, Terrazzo

	Standard	Established Values
CE/DOP	EN 14041/2006	Pass
Usage Classification	EN ISO 10874	23 – 33 – 42
Manufacturing Standard	EN 649	EN 649
Total Thickness	EN ISO 24346	5mm
Wear Layer Thickness	EN ISO 24340	0.55mm
Weight	EN ISO 23997	5.61kg/m <sup>2</sup>
Residual Indentation	EN ISO 24343-1	<0.10mm
Dimensional Stability	EN ISO 23999	≤0.15%
Chemical Resistance	EN ISO 26987	Pass
Colour Fastness to Light	EN 20105-B02	> 6 Class
Fire Resistance	EN 13501-1 Class Bfl-S1	Bfl-S1
Castor Chair Resistance	EN ISO 4918	Pass
Impact Sound Insulation	EN ISO 717-2	10dB
Reflected Walking Sound	EPLF 021029-F1	*** 9.2 stone
Thermal Resistance	EN ISO 8302	0.0315(m <sup>2</sup> .k)/W
Antistatic	EN ISO 1815	Yes
Formaldehyde	EN ISO 717-1	E1
VOC Emission		Indoor air comfort GOLD

The colour representations shown in this data sheet are as accurate as the limitations of the printing process will allow. Due to the manufacturing process of our floor tiles there may be a small variation in the PTV value. The slip resistance values are correct at the time of testing and represent the standard production value. Inadequate cleaning and maintenance will lead to significant reduction in the slip resistance of any tiles. The pendulum test results have been displayed in line with H&S Executive guidelines whereby 0-24 represents high slip potential, 25-35 moderate slip potential & 36+ represents a low slip potential.

For further information contact: T: 0116 276 2532 – W: [www.parkside.co.uk](http://www.parkside.co.uk) – E: [info@parkside.co.uk](mailto:info@parkside.co.uk)

Strata Technical Tiles is the partner brand of Parkside Architectural Tiles

# PRONTO

Luxury Vinyl Flooring Rigid Click I4F

Himalayan Stone, Twilight Oak, Lightening Oak

	Standard	Established Values
CE/DOP	EN 14041/2006	Pass
Usage Classification	EN ISO 10874	23/31
Manufacturing Standard	EN 649	EN 649
Overall Thickness	EN ISO 24346	+0.13mm/-0.10mm
Wear Layer Thickness	EN ISO 24340	0.3mm +13%/-10%
Weight	EN ISO 23997	18kg/pack
Residual Indentation	EN ISO 24343-1	≤0.35mm
Dimensional Stability	EN ISO 23999	≤0.25%
Chemical Resistance	EN ISO 26987	Class 0 Excellent
Colour Fastness to Light	EN 20105-B02	Minimum 6
Fire Resistance	EN 13501-1 Class Bfl-S1	Bfl-S1
Castor Chair Resistance	EN ISO 4918	10,000 cycle no delamination
Impact Sound Insulation	EN ISO 717-2	15dB
Abrasion Resistance	EN 660-2	Group T
Thermal Resistance	EN ISO 12664	0.054(m2.k)/W
Thermal Conductivity	EN ISO 12664	0.087w/(m.K)
Formaldehyde	EN ISO 717-1	E1
Toxicity	EN71-3	No Toxic, does not contain heavy metal

The colour representations shown in this data sheet are as accurate as the limitations of the printing process will allow. Due to the manufacturing process of our floor tiles there may be a small variation in the PTV value. The slip resistance values are correct at the time of testing and represent the standard production value. Inadequate cleaning and maintenance will lead to significant reduction in the slip resistance of any tiles. The pendulum test results have been displayed in line with H&S Executive guidelines whereby 0-24 represents high slip potential, 25-35 moderate slip potential & 36+ represents a low slip potential.

For further information contact: T: 0116 276 2532 – W: [www.parkside.co.uk](http://www.parkside.co.uk) – E: [info@parkside.co.uk](mailto:info@parkside.co.uk)

Strata Technical Tiles is the partner brand of Parkside Architectural Tiles

# PRONTO

Luxury Vinyl Flooring Rigid Click

Brant, Marta, Ivar, Brada Storm, Brada Chestnut

	Standard	Established Values
CE/DOP	EN 14041/2006	Pass
Usage Classification	EN ISO 10874	23, 31
Manufacturing Standard	EN 649	EN 649
Size	EN ISO 24337:2006	Deviation 0.15% of nominal length up to 0.5mm maximum
Squareness (mm)	EN ISO 24337:2006	Deviation <0.20mm
Straightness (mm)	EN ISO 24337:2006	Deviation <0.30mm
Overall Thickness	EN ISO 24337	5.5mm / 0.50mm
Wear Layer Thickness	EN ISO 24340	0.3mm +13%/-10% 0.55mm +13%/-10% (Brant & Vern)
Residual Indentation	EN ISO 24343-1	<0.15mm (0.02mm actual)
Hardness	EN ISO 24343:2007	<0.1mm
Dimensional Stability	EN ISO 23999	<0.25%
Chemical Resistance	EN 423:2001	Index 0
Resistance to Staining	EN 438-2:2005	Level 5 / no visible staining
Colour Fastness to Light	EN ISO 105-B02	Minimum 6
Fire Resistance	EN 13501-1 Class Bfl-S1	Bfl-S1
Castor Chair Resistance	EN ISO 4918	25000 cycle no delamination
Impact Sound Insulation	ASTM E989-12	IIC – 26
Abrasion Resistance	EN 660-1	Less than 0.015g/1000r
Toxicity	ROHS / REACH	Non toxic, does not contain any heavy metals or formaldehyde

The colour representations shown in this data sheet are as accurate as the limitations of the printing process will allow. Due to the manufacturing process of our floor tiles there may be a small variation in the PTV value. The slip resistance values are correct at the time of testing and represent the standard production value. Inadequate cleaning and maintenance will lead to significant reduction in the slip resistance of any tiles. The pendulum test results have been displayed in line with H&S Executive guidelines whereby 0-24 represents high slip potential, 25-35 moderate slip potential & 36+ represents a low slip potential.

For further information contact: T: 0116 276 2532 – W: [www.parkside.co.uk](http://www.parkside.co.uk) – E: [info@parkside.co.uk](mailto:info@parkside.co.uk)

Strata Technical Tiles is the partner brand of Parkside Architectural Tiles

# PRONTO

Luxury Vinyl Flooring Rigid Click  
Ketton, Naxos, Vermont, Ashford

	Requirement	Established Values
CE/DOP	EN 14041/2006	Pass
Material Composition	-	Polymer with Stone Powder
Manufacturing Standard	ASTM F3261	ASTM F3261
Size	+/- 0.4mm	Pass
Density	+/- 0.50g/cc	1.950 to 2.05
Rectangularity	+/- 0.50%	Squareness less than 0.25mm
Overall Thickness	-	7.5mm
Wear Layer Thickness	+13%/-10%	0.3mm Pass
Peel Strength	N/mm	>90n/mm
Cross hatch adhesion	-	5B
Gloss Value	+/- 2	6
Chemical Resistance	EN 423:2001	Pass
Resistance to Staining	EN 438-2:2005	Pass
Fire Resistance	EN 13501-1 Class Bfl-S1	Bfl-S1
Castor Chair Resistance	EN ISO 4918	Pass
Impact Sound Insulation	ASTM E989-12	IIC – 26
Abrasion Resistance	EN 660-1	Less than 0.015g/1000r
Toxicity	ROHS / REACH	Non toxic, does not contain any heavy metals or formaldehyde

The colour representations shown in this data sheet are as accurate as the limitations of the printing process will allow. Due to the manufacturing process of our floor tiles there may be a small variation in the PTV value. The slip resistance values are correct at the time of testing and represent the standard production value. Inadequate cleaning and maintenance will lead to significant reduction in the slip resistance of any tiles. The pendulum test results have been displayed in line with H&S Executive guidelines whereby 0-24 represents high slip potential, 25-35 moderate slip potential & 36+ represents a low slip potential.

For further information contact: T: 0116 276 2532 – W: [www.parkside.co.uk](http://www.parkside.co.uk) – E: [info@parkside.co.uk](mailto:info@parkside.co.uk)

Strata Technical Tiles is the partner brand of Parkside Architectural Tiles



# PRONTO

Luxury Vinyl Flooring Rigid Click

Afara, Daintree, Denya, Friston, Hafren, Yarran

	Requirement	Established Values
CE/DOP	EN 14041/2006	Pass
Material Composition	-	Polymer with Stone Powder
Manufacturing Standard	ASTM F3261	ASTM F3261
Size	+/- 0.4mm	Pass
Density	+/- 0.50g/cc	1.950 to 2.05
Rectangularity	+/- 0.50%	Squareness less than 0.25mm
Overall Thickness	-	5mm
Wear Layer Thickness	+13%/-10%	0.5mm Pass
Peel Strength	N/mm	>90n/mm
Cross hatch adhesion	-	5B
Gloss Value	+/- 2	12
Chemical Resistance	<20	Pass
Resistance to Staining	EN 438-2:2005	Pass
Fire Resistance	EN 13501-1 Class Bfl-S1	Bfl-S1
Castor Chair Resistance	EN ISO 4918	25000 cycle no delamination
Impact Sound Insulation	-	62
Abrasion Class		AC4

The colour representations shown in this data sheet are as accurate as the limitations of the printing process will allow. Due to the manufacturing process of our floor tiles there may be a small variation in the PTV value. The slip resistance values are correct at the time of testing and represent the standard production value. Inadequate cleaning and maintenance will lead to significant reduction in the slip resistance of any tiles. The pendulum test results have been displayed in line with H&S Executive guidelines whereby 0-24 represents high slip potential, 25-35 moderate slip potential & 36+ represents a low slip potential.

For further information contact: T: 0116 276 2532 – W: [www.parkside.co.uk](http://www.parkside.co.uk) – E: [info@parkside.co.uk](mailto:info@parkside.co.uk)

Strata Technical Tiles is the partner brand of Parkside Architectural Tiles